

School District Profile

Woodward-Granger Community School District

**Dallas County
Hazard Mitigation Plan 2023**

Local Planning Team

Table WGS.1: Woodward-Granger School District Local Planning Team

Name	Title	Jurisdiction
Mark Lane	Superintendent	Woodward-Granger Community School District
Dave Smeltzer	Director of Maintenance & Grounds	Woodward-Granger Community School District
Cody Churchill	Director of Technology	Woodward-Granger Community School District

Location and Services

Woodward-Granger Community School District is located in Dallas, Boone, and Polk Counties, and serves the communities of Woodward and Granger. The district’s mission, as expressed on its website, states: “Woodward-Granger CSD will build futures one student at a time through a supportive culture of high expectations.” The district is comprised of four schools and a learning center: Woodward-Granger High School, Woodward-Granger Middle School, Woodward-Granger Elementary, Grandwood School, and Early Learning Center. The district allows open enrollment opt-in services to students from Perry, Madrid, Grimes, Ogden, Dallas Center, and Johnston. The district office is located in Granger. English is the predominant language, but Spanish is also spoken in the district. At this time emergency instructions or notices are not available in Spanish or other languages spoken beyond English.

Demographics

The following figure displays the historical student population trend starting with the 2005-06 school year and ending with the 2021-2022 year. It indicates that the student population has remained fairly steady over the past decade. According to the local planning team, enrollment is expected to increase over the next five years due to new housing developments in both Granger and Woodward. There are currently 1,170 students enrolled in the district.¹

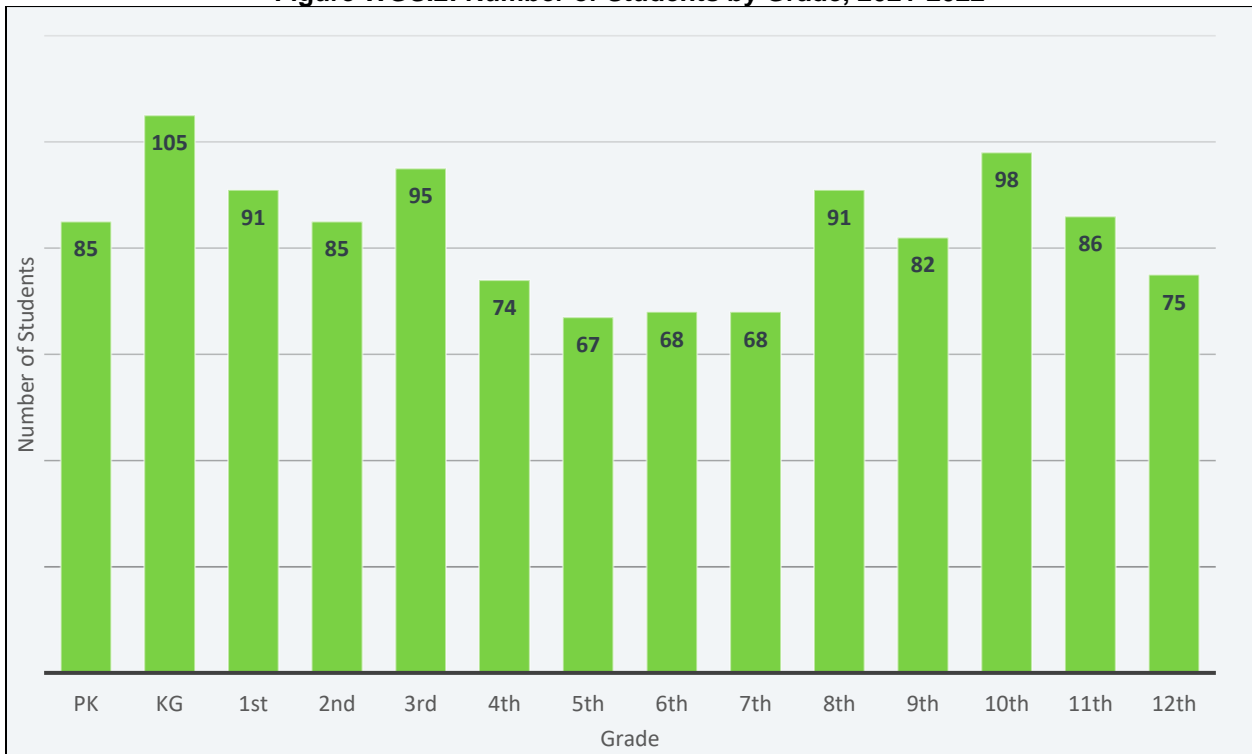
¹ Iowa Department of Education. December 2021. “2021-2022 Iowa Public School Building PreK-12 Enrollments by School, Grade, Race and Gender.” <https://educateiowa.gov/document-type/public-school-building-prek-12-enrollment-grade-race-and-gender>.

Section Seven: Woodward-Granger School District Profile

Figure WGS.1: Student Population 2005-2022



Figure WGS.2: Number of Students by Grade, 2021-2022



Source: Iowa Department of Education

Figure WGS.3: Woodward-Granger School District

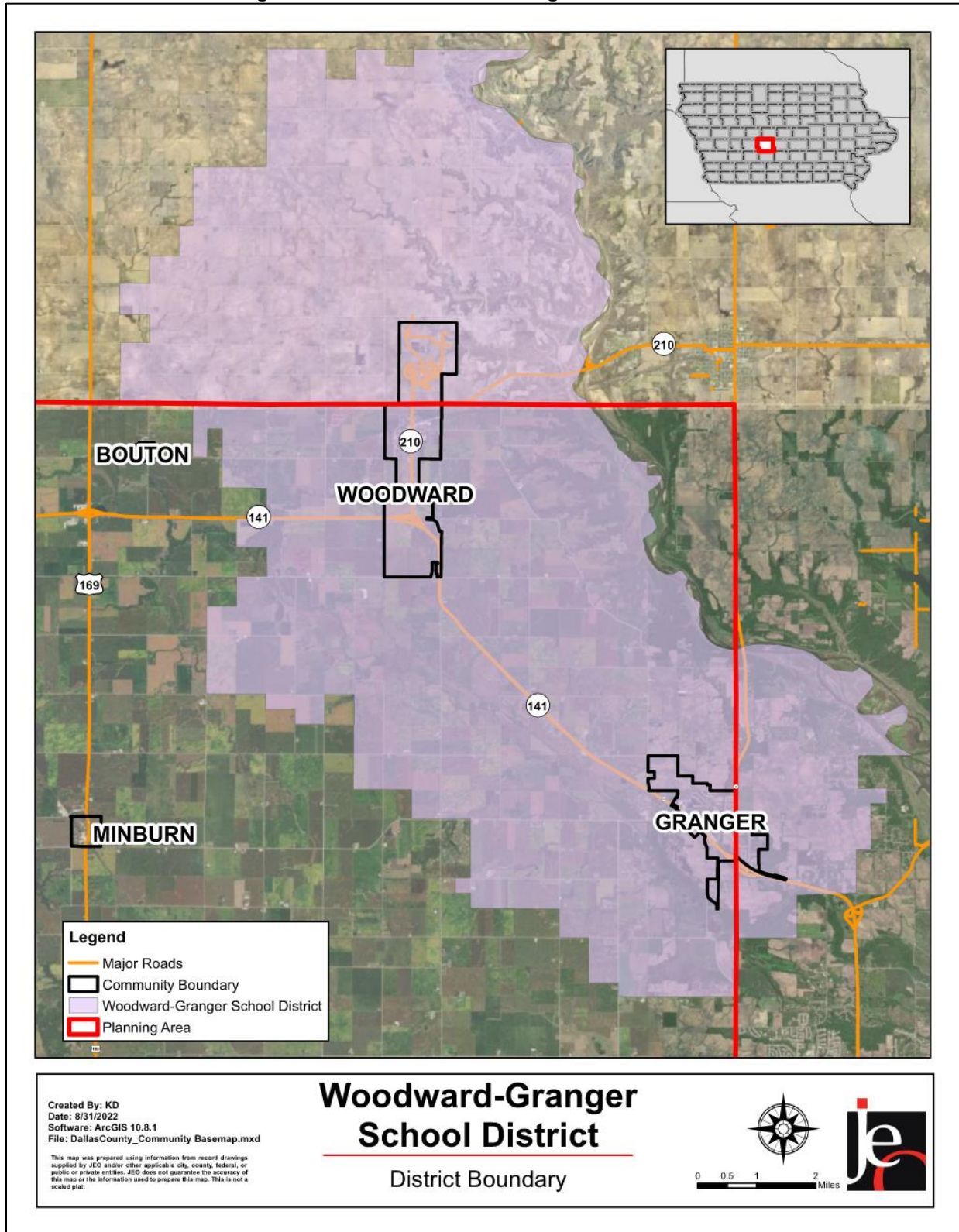


Figure WGS.2 indicates that the largest number of students are in Kindergarten, 3rd, and 10th grades. The lowest number of students are in 5th, 6th, and 7th grades. According to the Iowa Department of Education, 13.3% of students receive either free or reduced priced meals at school. This is lower than the state average of 40.7%. Additionally, 13.4% of students are in the Special Education Program and 1.3% of students are English Language Learners. These particular students may be more vulnerable during a hazardous event than the rest of the student population.

Table WGS.2: K-12 Student Statistics, 2021-2022

	District	State of Iowa
Free/Reduced Priced Meals	13.3%	40.7%
Special Education Students	13.4%	13.2%
English Language Learners (ESL)	1.3%	6.6%

Source: Iowa Department of Education²

Administration and Staff

The school district has 237 district employees, including a superintendent, four principals, and supportive staff. The school board is made up of a five-member panel. The district also has several additional departments and staff that may be available to implement hazard mitigation initiatives including Custodial, Maintenance, and Grounds crews, Technology staff, and a Safety Committee. The district annually trains staff on all emergency procedure developments.

Capability Assessment

The capability assessment consisted of a review of local existing policies, regulations, plans, and programs with hazard mitigation capabilities. The following tables summarize the district's planning and regulatory capability; administrative and technical capability; fiscal capability; educational and outreach capability; and overall capability to implement mitigation projects. Students and families are educated on emergency procedures through specific course curriculum and participation in drills. The Infinite Campus student information management system is used during emergency events to notify parents and staff. The system has a built in translation feature for students, families, and staff that speak different languages. The school district is currently in beginning conversations to increase their emergency preparations through additional exercises and education with local fire and police departments.

Table WGS.3: Capability Assessment

Survey Components/Subcomponents		Yes/No
Planning & Regulatory Capability	Facility Improvements Plan	No
	Continuity of Operations Plan	No
	Crisis Response Plan	Yes
	Strategic Plan	No
	Grant Manager	No
	Mutual Aid Agreement	No
	Other (if any)	

² Iowa Department of Education. "Student Demographic Information." Accessed April 2022. <https://educateiowa.gov/data-reporting/education-statistics-pk-12>

Survey Components/Subcomponents		Yes/No
Fiscal Capability	Applied for grants in the past	Yes
	Awarded grants in the past	Yes
	Authority to levy taxes for specific purposes such as mitigation projects	Yes
	General Obligation Revenue or Special Tax Bonds	Yes
	Approved bonds in the past	Yes
	Flood Insurance	No
	Other (if any)	
Education & Outreach Capability	Local school groups or non-profit organizations focused on environmental protection, emergency preparedness, access, and functional needs populations, etc. (Ex. Parent groups, Crisis Response Teams, etc.)	No
	Hazard education or information program	No
	StormReady Certification	No
	Other (if any)	
Drills	Fire	4 / year
	Tornado	4 / year
	Intruder	0 / year
	Bus evacuation	2 / year
	Evacuation	0 / year
	Other (if any)	

Table WGS.4: Overall Capability

Overall Capability	Limited/Moderate/High
Financial resources needed to implement mitigation projects	Moderate
Staff/expertise to implement projects	Limited
Public support to implement projects	Moderate
Time to devote to hazard mitigation	Limited

Plan Integration

Grants and Funding

According to the local planning team, district funds are currently limited to maintaining facilities and systems. Over the next three to five years the district will be working toward increasing their capacity to build a new school, but no large portion of funds have been dedicated to this project. Over recent years funding has increased due to increasing enrollment.

Crisis Response Plan

The school district relies on a Crisis Response Plan to react to hazard events. The school district is currently working with local law enforcement and city governments to review and update the plan in 2022. The plan discusses natural hazards, addresses shelter in place protocols, and identifies the following: scenarios that require evacuation, critical evacuation routes, sheltering locations, and opportunities for mitigation following an event. It does not discuss gaps related to any particular hazard.

Future Development Trends

Over the past five years the major developments to occur in the school district have been repair efforts on damage caused by derecho events. There are currently no plans for new construction or renovations within the district.

Community Lifelines

Transportation

According to the local planning team, Highway 141 runs through the district and is a major state road leading into the Des Moines metropolitan area. To date, no major accidents have impacted schools within the district. Woodward-Granger CSD owns 11 school buses and approximately 400 students are bused to and from school each day.

Hazardous Materials

According to the Tier II System reports submitted to the Iowa Department of Natural Resources, there are four chemical storage sites in Granger and Woodward that contain hazardous chemicals. No additional chemical storage facilities of concern were identified. According to the local planning team, in the event of a chemical spill the local fire department would be first to respond to the incident. Highways 141 and 17 are the most at risk if spills occur. No known chemical spills have impacted the school district.

Table WGS.5: Chemical Storage Sites

Facility Name	Address	Located in Floodplain?
Ferrellgas	12676 NW 102nd St Granger, IA 50109	No
Granger Maintenance Building	2111 West Kennedy Blvd Granger, IA 50109	No
Landus Cooperative - Woodward	110 Railway St Woodward, IA 50276	No
Minburn Telecommunications Inc.	108 W 2nd St Woodward, IA 50276	No

Source: Iowa Department of Natural Resources³

Using location data for district buildings and chemical storage sites, an analysis was run to determine which schools have chemical sites within a one-mile radius. The results of this analysis can be seen in the table below.

Table ADM.6: School Buildings Within One Mile of Chemical Storage Sites

School Building	Address	# of Storage Sites Within One Mile
Woodward-Granger Middle School	306 W 3rd St Woodward, Iowa, 50276	2
Woodward-Granger High School	306 W 3rd St Woodward, Iowa, 50276	2

³ Iowa Department of Natural Resources. 2022. "Emergency Response - Tier II Chemical Storage." Accessed April 2022. <https://facilityexplorer.iowadnr.gov/facilityexplorer/>.

Critical Facilities

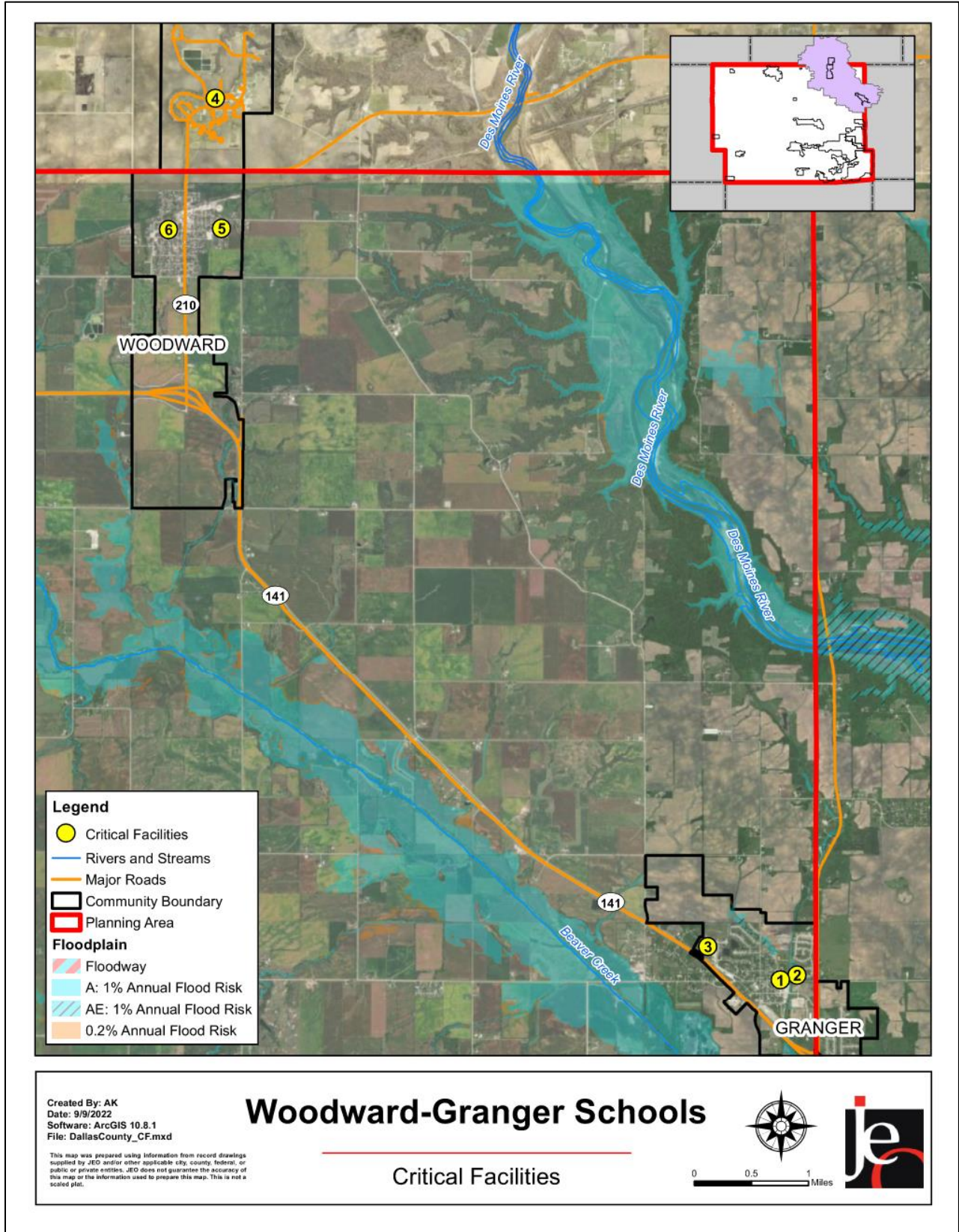
The local planning team identified critical facilities that are vital for disaster response, public shelter, and essential for returning the jurisdiction’s functions to normal during and after a disaster per the FEMA Community Lifelines guidance. Critical facilities were identified during the original planning process and updated by the local planning team as a part of this plan update.

The following table and figure provide a summary of the critical facilities for the jurisdiction.

Table WGS.7: Critical Facilities

CF #	Name	Mass Care (Y/N)	Generator (Y/N)	Floodplain (Y/N)
1	Woodward-Granger Early Learning Center	Y	N	N
2	Woodward-Granger Elementary School	Y	N	N
3	Grandwood Education Center	N	N	N
4	Woodward Academy	N	N	N
5	Woodward Granger Hawk Stadium	N	N	N
6	Woodward-Granger Middle School/High School	Y	N	N

Figure WGS.4: Map of Critical Facilities



Historical Occurrences

See the community profiles for the City of Granger and the City of Woodward for historical hazard events.

Hazard Prioritization

The hazards discussed in detail below were selected by the local planning team from the county hazard list as the relevant hazards for the jurisdiction. The selected hazards were prioritized by the local planning team based on historical hazard occurrences, potential impacts, and the community's capabilities. For additional discussion regarding area-wide hazards, please see *Section Four: Risk Assessment*.

Severe Thunderstorms (Includes Hail and Lightning)

This hazard was identified as a top hazard of concern for the school district due to the potential loss of life or injury to staff and students and potential damage to district facilities. In the past the school district has experienced roof damage and damage to metal siding at the athletic facilities due to severe thunderstorms. To mitigate the impacts of a severe thunderstorm on the school district, the school computer servers are equipped with battery backups in the event of a power outage. The teachers and staff rely on cell phone alerts to keep track of incoming severe weather.

Severe Winter Storms

Frequency and transportation impacts are the main concerns for this hazard, according to the planning team. With the school district split between Woodward and Granger, student travel can especially be impacted to winter weather conditions. In the past few years, the district has experienced normal Midwest winter storms which have caused delays and cancellations. The district's critical facilities have not experienced significant damage due to winter storms.

Tornado and Windstorm

This hazard was identified as a top hazard of concern for the school district due to the potential loss of life or injury to staff and students and potential damage to district facilities. In the past the school district has experienced roof damage and damage to metal siding at the athletic facilities due to derecho winds. In the event of a tornado or windstorm that requires student, teachers, and staff to take shelter, the district uses interior bathrooms and locker rooms for sheltering.

Transportation Incident

Transportation Incidents have been identified as a top hazard of concern by the school district due to the 10-mile distance between the two communities served. A significant number of students are transported by the school district each day. Past events of transportation incidents within the school district includes a student struck and killed by a school bus in the high school parking lot in the fall of 2020, a bus driver running a red light resulting in a collision in the summer of 2021, and a bus driver experienced a heart attack while transporting students that caused the bus to run off the 141-entry ramp into Woodward and stop in a bean field in the fall of 2021. The driver of the bus in the fall of 2021 passed away due to the heart attack and no students were injured. In an effort to reduce the occurrences of transportation incidents, the school district has reconfigured the high school parking lot for only one way traffic and school bus loading and unloading was relocated behind the high school. The school district has also halted a routine of buses stopping in Moran to change drivers in the fall of 2020. Now bus drivers remain in the same bus when driving between Woodward and Granger with no stops along the way.

Mitigation Strategy

Continued Mitigation and Strategic Actions

Mitigation Action	Safe Room
Description	Design and construct storm shelters and safe rooms in highly vulnerable areas. If the District decides to build in Granger, a safe room will be considered as part of the plan. It will be advertised within the community and open to anyone who needs it during inclement weather.
Hazard(s)	All hazards
Estimated Cost	\$750,000 to \$1,500,000
Funding	Local funds, HMA
Timeline	2-4 years
Priority	High
Lead Agency	Woodward-Granger Board of Education and the City of Granger
Status	No progress has been made on this mitigation action at this time.

Plan Maintenance

Hazard Mitigation Plans should be living documents and updated regularly to reflect changes in hazard events, priorities, and mitigation actions. These updates are encouraged to occur after every major disaster event, alongside planning documents (e.g., annual budgets, etc.), during the fall before the HMA grant cycle begins, and/or prior to other funding opportunity cycles begin.

The local planning team is responsible for reviewing and updating this profile as changes occur or after a major event. The local planning team will include the Superintendent, Business Manager, Director of Maintenance and Grounds, and the Director of Technology. The plan will be reviewed annually, and the students, staff, and parents will be included in the review and revision process via the School Improvement Advisory Committee which meets quarterly.