

School District Profile

West Central Valley School District

**Dallas County
Hazard Mitigation Plan 2023**

Local Planning Team

Table WCV.1: West Central Valley School District Local Planning Team

Name	Title	Jurisdiction
Rusty Shockley	Superintendent	West Central Valley Schools

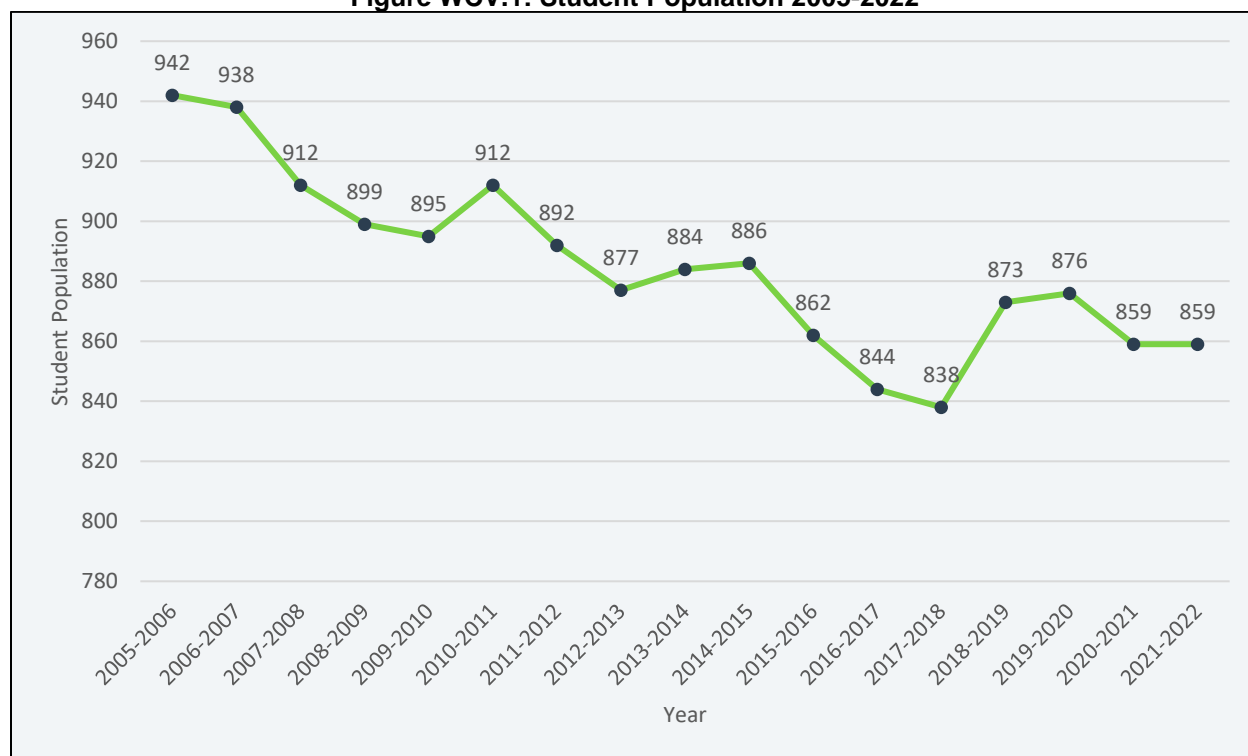
Location and Services

West Central Valley School District is located in Adair, Dallas, and Guthrie Counties, approximately 20 miles west of Des Moines. The district includes the communities of Dexter, Menlo, Redfield, and Stuart. The district’s mission, as expressed on its website, states: “West Central Valley School District prepares students for success.” The district is comprised of four schools: West Central Valley High School, West Central Valley Middle School, Dexter Elementary, and Stuart Elementary. The district office is located in Stuart. The predominant language spoken in the district is English, but Spanish and Gujarati are also spoken.

Demographics

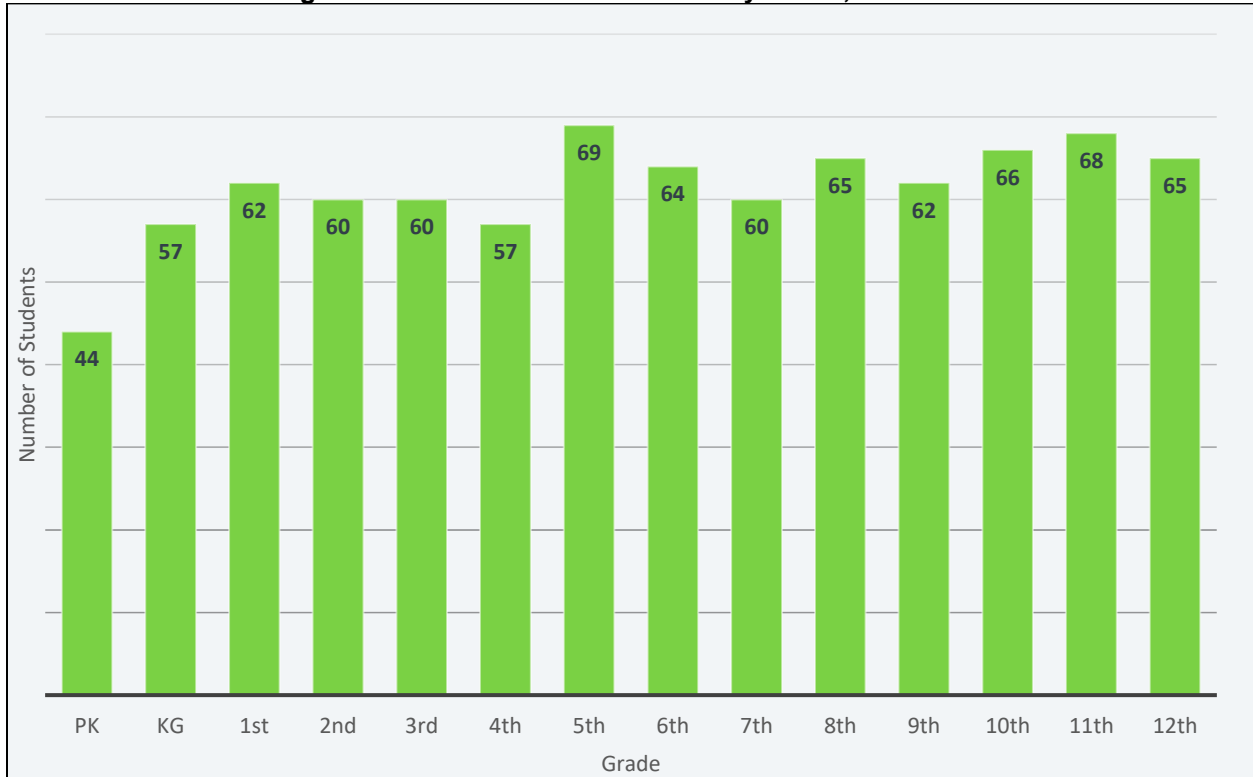
The following figure displays the historical student population trend starting with the 2005-06 school year and ending with the 2021-2022 year. It indicates that the student population has fluctuated in recent years. The local planning team anticipates little change in enrollment projections. There are 859 students enrolled in the district.¹ Emergency instructions or notices are not available in languages other than English.

Figure WCV.1: Student Population 2005-2022



¹ Iowa Department of Education. December 2021. “2021-2022 Iowa Public School Building PreK-12 Enrollments by School, Grade, Race and Gender.” <https://educateiowa.gov/document-type/public-school-building-prek-12-enrollment-grade-race-and-gender>.

Figure WCV.2: Number of Students by Grade, 2021-2022



Source: Iowa Department of Education

Figure WCV.3: West Central Valley School District

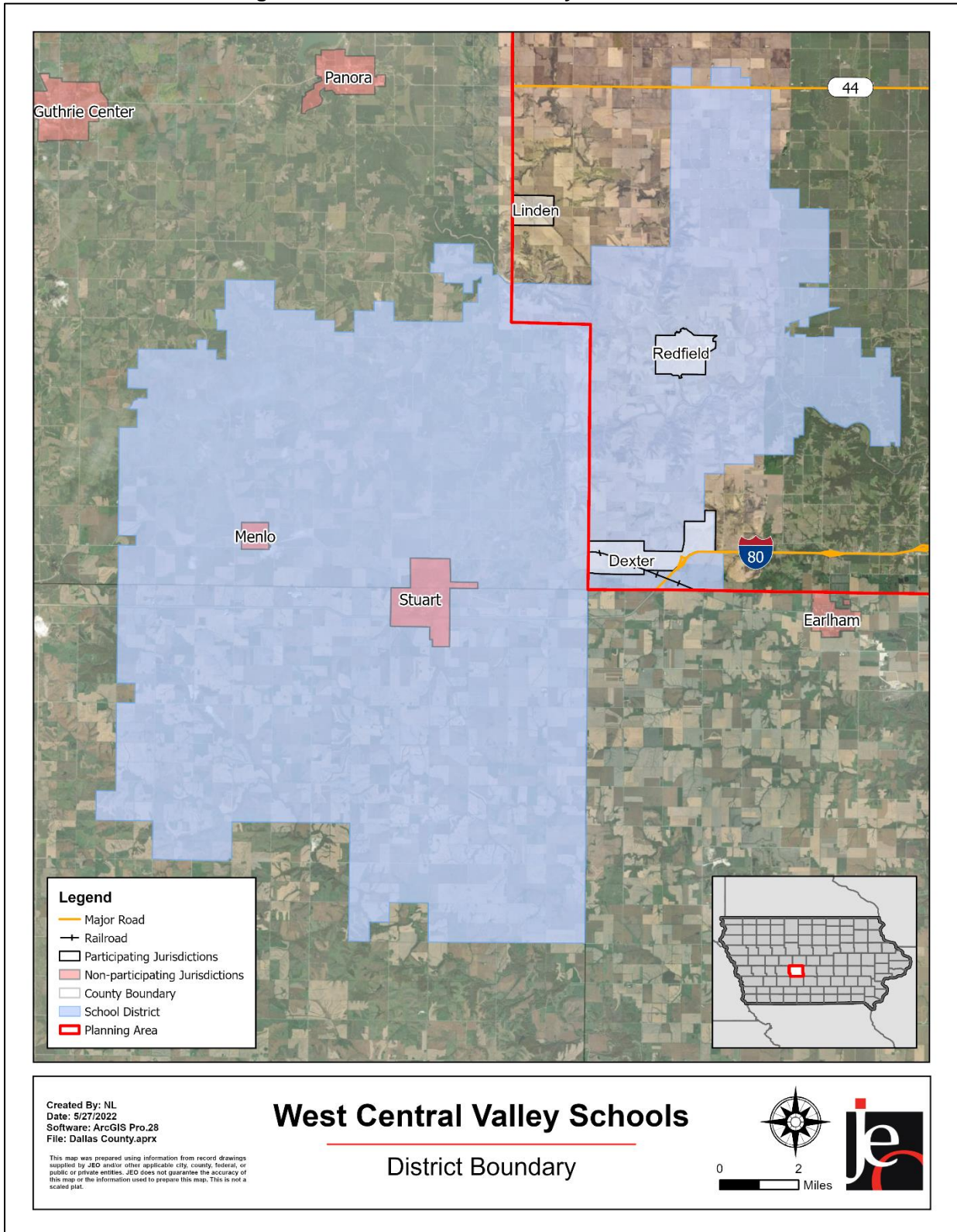


Figure WCV.2 indicates that the largest number of students are in 5th, 10th, and 11th grades. The lowest number of students are in Pre-Kindergarten. According to the Iowa Department of Education, 42.7% of students receive either free or reduced priced meals at school. This is higher than the state average of 40.7%. Additionally, 13.6% of students are in the Special Education Program and 0.2% of students are English Language Learners. These particular students may be more vulnerable during a hazardous event than the rest of the student population.

Table WCV.2: K-12 Student Statistics, 2021-2022

	District	State of Iowa
Free/Reduced Priced Meals	42.7%	40.7%
Special Education Students	13.6%	13.2%
English Language Learners (ESL)	0.2%	6.6%

Source: Iowa Department of Education²

Administration and Staff

The school district has a superintendent, three principals, one assistant principal, and supportive staff. The school board is made up of a seven-member panel. There are 73 total teachers and staff members employed by the district. The district also has a number of additional departments and staff that may be available to implement hazard mitigation initiatives, including the administrative team, buildings and grounds department, SIAC Committee, building leadership teams, and technology department. District staff is trained in emergency procedures through drills and professional development training for teachers.

Capability Assessment

The capability assessment consisted of a review of local existing policies, regulations, plans, and programs with hazard mitigation capabilities. The following tables summarize the district's planning and regulatory capability; administrative and technical capability; fiscal capability; educational and outreach capability; and overall capability to implement mitigation projects. Students and families are educated in emergency procedures through drills, website updates, newsletters, text message communications, and reviews of the Emergency Operations Plan. Emergency notifications are delivered via text message, social media posts, and email alerts. These notifications are only available in English. The school district works with Stuart Police Department on emergency planning exercises.

Table WCV.3: Capability Assessment

Survey Components/Subcomponents		Yes/No
Planning & Regulatory Capability	Facility Improvements Plan	No
	Continuity of Operations Plan	No
	Crisis Response Plan	Yes
	Strategic Plan	No
	Grant Manager	No
	Mutual Aid Agreement	No
	Other (if any)	

² Iowa Department of Education. "Student Demographic Information." Accessed April 2022. <https://educateiowa.gov/data-reporting/education-statistics-pk-12>

Survey Components/Subcomponents		Yes/No
Fiscal Capability	Applied for grants in the past	No
	Awarded grants in the past	No
	Authority to levy taxes for specific purposes such as mitigation projects	Yes
	General Obligation Revenue or Special Tax Bonds	Yes
	Approved bonds in the past	Yes
	Flood Insurance	Yes
	Other (if any)	
Education & Outreach Capability	Local school groups or non-profit organizations focused on environmental protection, emergency preparedness, access, and functional needs populations, etc. (Ex. Parent groups, Crisis Response Teams, etc.)	Yes
	Hazard education or information program	No
	StormReady Certification	No
	Other (if any)	
Drills	Fire	4 / year
	Tornado	4 / year
	Intruder	1 / year
	Bus evacuation	2 / year
	Evacuation	0 / year
	Other (if any)	

Table WCV.4: Overall Capability

Overall Capability	Limited/Moderate/High
Financial resources needed to implement mitigation projects	Limited
Staff/expertise to implement projects	Limited
Public support to implement projects	Moderate
Time to devote to hazard mitigation	Limited

Plan Integration

Grants and Funding

According to the local planning team, district funds are sufficient to pursuing new capital projects and have increased slightly over recent years. The school district is beginning the process of completing a facilities study to look at buildings. A large portion of funds are dedicated through the General Obligation and Revenue Purpose Bonds for the High School and Athletic Complex. The school district has not applied for or been awarded any grants in the last five years.

Emergency Operations Plan

The school district uses an Emergency Operations Plan to react to hazardous events. This EOP discusses natural hazards, addresses shelter in place protocols, and identifies critical evacuation routes and sheltering locations.

Future Development Trends

Over the past five years, school district facilities have remained unchanged. The school district is beginning the process of a facilities study on district buildings. Any new construction to occur in the future will involve a safe room.

Community Lifelines

Transportation

According to the local planning team, concerns over transportation issues include high traffic roads within the district, winter driving conditions, and potential blockages due to chemical or gas leaks. The school district has been impacted by two bus accidents on high traffic roads in the past five years. Accidents have blocked Highway 6 with bad winter driving conditions and chemical leaks/spills have blocked the districts main roads. The West Central Valley School District owns 17 buses and transports approximately 475 students to and from school each day.

Hazardous Materials

According to the Tier II System reports submitted to the Iowa Department of Natural Resources, there are 18 chemical storage sites in Dexter, Menlo, Redfield, and Stuart that contain hazardous chemicals. According to the local planning team, local law enforcement, fire, and EMS services would be first to respond to a chemical spill incident. Within the school district, Highway 6 and Division Street are of most concern and in the past a propane leak has occurred locally.

Table WCV.5: Chemical Storage Sites

Facility Name	Address	Located in Floodplain?
MidAmerican Energy - Arbor Hill Substation	1259 York Avenue Dexter, IA 50070	No
Ferrellgas	312 Adair Street Menlo, IA 50164	No
Flint Hills Resources Menlo LLC	3363 Talon Avenue Menlo, IA 50164	No
SCCI – Menlo Quarry	1298 Orange Avenue Menlo, IA 50164	No
Glen-gery Corporation	1519 Highway 6 Redfield, IA 50233	No
Heartland Co-op Redfield East Agronomy	30352 G Avenue Redfield, IA 50233	No
Heartland Co-op Redfield Main Location	513 1 Street Redfield, IA 50233	No
Heartland Co-op - Redfield West	15571 Hwy 6 Redfield, IA 50233	No
Northern Natural Gas - Redfield Compressor Station	24282 G Avenue Redfield, IA 50233	No
Windstream Iowa Telecom - Redfield	111 Thomas Street Redfield, IA 50233	No
CenturyLink - Stuart CO	121 N Gaines Street Stuart, IA 50250	No
CenturyLink - Stuart Regen	308 E Front Street Stuart, IA 50250	No
Growmark Inc. - Stuart Terminal	1003 SW 7 th Street Stuart, IA 50250	No

Section Seven: West Central Valley School District Profile

Landus Cooperative - Stuart	215 S Madison Street Stuart, IA 50250	No
Pelgas Inc	405 E Front Street Stuart, IA 50250	No
Stuart	1155 Victor Avenue Stuart, IA 50250	No
Stuart Distribution and Pre-Finish	706 SW 8th Street Stuart, IA 50250	No
Stuart Egg Farm	2650 350th Road Stuart, IA 50250	No

Source: Iowa Department of Natural Resources³

Using location data for district buildings and chemical storage sites, an analysis was run to determine which schools have chemical sites within a one-mile radius. The results of this analysis can be seen in the table below.

Table WCV.6: School Buildings Within One Mile of Chemical Storage Sites

School Building	Address	# of Storage Sites Within One Mile
Redfield Middle School	1375 High St Redfield, Iowa, 50233	3
Stuart High School	3299 White Pole Rd Stuart, Iowa, 50250	4
Stuart Elementary	320 NE 3rd St Stuart, Iowa, 50250	5
District Office	3299 White Pole Rd Stuart, Iowa, 50250	4

Critical Facilities

The local planning team identified critical facilities that are vital for disaster response, public shelter, and essential for returning the jurisdiction's functions to normal during and after a disaster per the FEMA Community Lifelines guidance. Critical facilities were identified during the original planning process and updated by the local planning team as a part of this plan update.

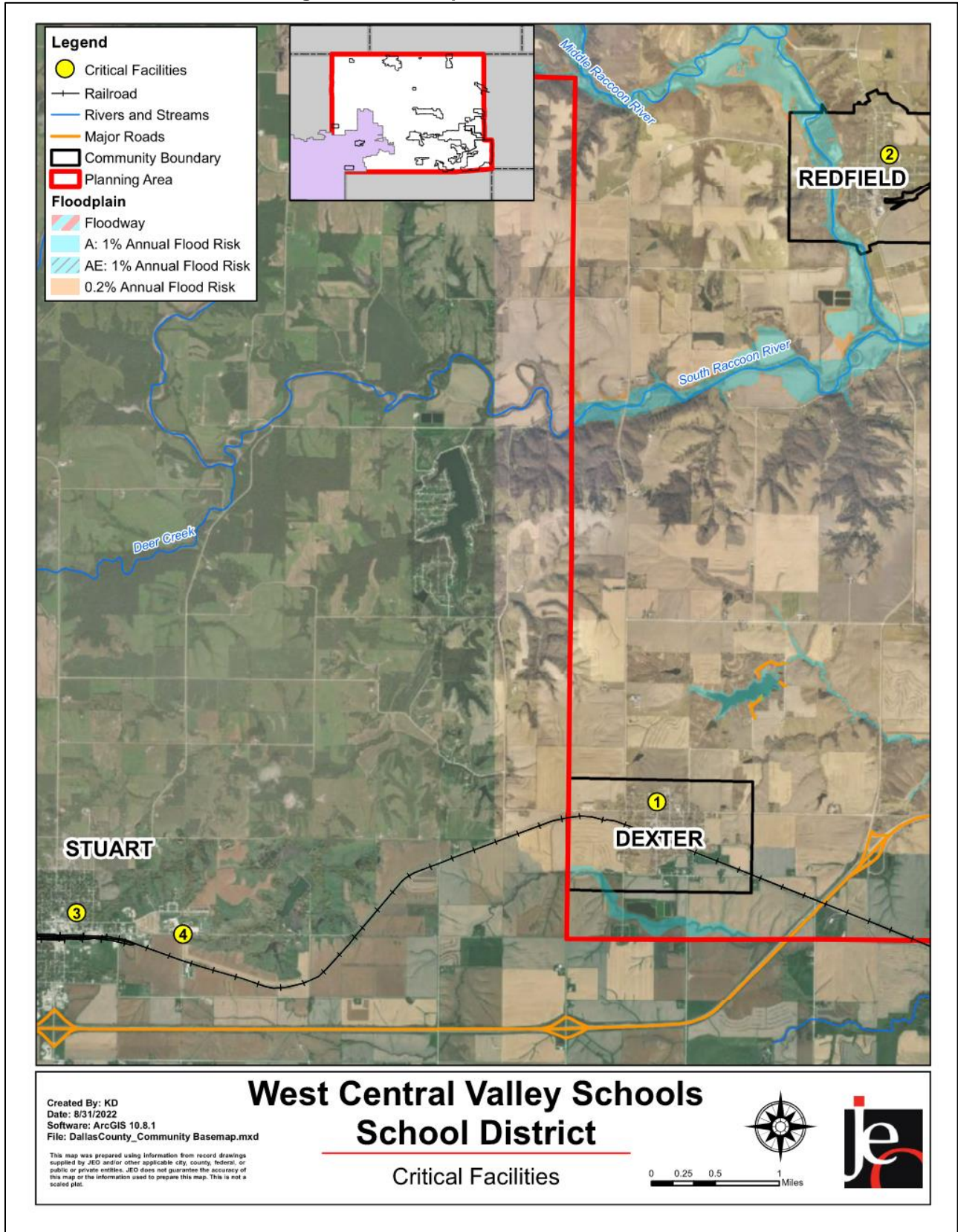
The following table and figure provide a summary of the critical facilities for the jurisdiction.

Table WCV.7: Critical Facilities

CF #	Name	Mass Care (Y/N)	Generator (Y/N)	Floodplain (Y/N)
1	Dexter Elementary School	Y	N	N
2	West Central Valley Middle School	Y	N	N
3	Stuart Elementary School	Y	N	N
4	West Central Valley High School	Y	N	N

³ Iowa Department of Natural Resources. 2022. "Emergency Response - Tier II Chemical Storage." Accessed April 2022. <https://facilityexplorer.iowadnr.gov/facilityexplorer/>.

Figure WCV.4: Map of Critical Facilities



Historical Occurrences

See the community profiles for the City of Dexter and the City of Redfield for historical hazard events.

Hazard Prioritization

The hazards discussed in detail below were selected by the local planning team from the county hazard list as the relevant hazards for the jurisdiction. The selected hazards were prioritized by the local planning team based on historical hazard occurrences, potential impacts, and the community's capabilities. For additional discussion regarding area-wide hazards, please see *Section Four: Risk Assessment*.

Severe Winter Storms

The safety of students, staff, and community are the main concerns for this hazard, according to the planning team. With the school district being a large rural district, severe winter storms can pose problems for the safety of the school district with the potential for bad road conditions. Yearly the school district experiences significant winter storms that impact the transportation ability of students, teachers, and staff due to the rural nature of the area. The winter storms have not caused structural damage to any critical facilities within the district.

Tornado and Windstorm

Tornado and Windstorm was identified as a top hazard of concern for the school district. The Dexter and Redfield Schools are not equipped with high wind event rooms leading to potential safety issues for students and staff. The school district has implemented safe rooms at Stuart Elementary and the West Central Valley High School, however there are no sirens installed in the district.

Transportation Incident

The West Central Valley School District is mostly concerned about the large rural location of the district. Many students are transported across a large area where the likelihood of transportation incidents is high. In the past, school district buses have had accidents.

Mitigation Strategy

Mitigation Action	Dexter Elementary Saferoom Construction
Description	The construction of a saferoom is needed to protect students and staff in case of a tornado.
Hazard(s)	All hazards
Estimated Cost	\$320,000
Funding	Local funds, HMA
Timeline	3-6 years
Priority	High
Lead Agency	Superintendent
Status	Not started

Mitigation Action	Saferoom in Middle School - Redfield
Description	The construction of a saferoom is needed to protect students and staff in case of a tornado.
Hazard(s)	All hazards
Estimated Cost	\$400,000
Funding	Local funds, HMA
Timeline	3-6 years
Priority	High
Lead Agency	Superintendent
Status	Not Started

Plan Maintenance

Hazard Mitigation Plans should be living documents and updated regularly to reflect changes in hazard events, priorities, and mitigation actions. These updates are encouraged to occur after every major disaster event, alongside planning documents (e.g., annual budgets, etc.), during the fall before the HMA grant cycle begins, and/or prior to other funding opportunity cycles begin.

The local planning team is responsible for reviewing and updating this profile as changes occur or after a major event. The local planning team will include the Superintendent. The plan will be reviewed bi-annually. Students, staff, and parents will be included in the plan review and revision through social media updates, website notices, JMC notifications, and school board meetings.