

School District Profile

Waukee School District

**Dallas County
Hazard Mitigation Plan 2023**

Local Planning Team

Table WSD.1: Waukee School District Local Planning Team

Name	Title	Jurisdiction
Stacie DeHaan	Director of Instructional Services	WCSD
Kirk Johnson	Chief Operating Officer	WCSD
Sarah Kautz	Chief Financial Officer	WCSD
Roxanne Livermore	Executive Director of Human Resources	WCSD
Amy Varcoe	Executive Director of Communications	WCSD

Location and Services

Waukee School District is located in Dallas and Polk Counties and covers much of the western Des Moines metro area. The district serves students in the communities of Clive, Urbandale, Waukee, and West Des Moines. The school districts athletics, activities, and community education camps and clinics are available as opt-in services for surrounding communities. The district’s vision, as expressed on its website, states “Inspiring learners who feel valued, challenged, and prepared to embrace tomorrow’s opportunities.” The district’s predominant language is English with Spanish, Arabic, Bosnian, and Telugu being the next more frequently spoken. The district is comprised of sixteen schools and two learning centers:

- K-5 Attendance Centers:
 - Brookview Elementary School
 - Eason Elementary School
 - Grant Ragan Elementary School
 - Maple Grove Elementary School
 - Radiant Elementary School
 - Shuler Elementary School
 - Sugar Creek Elementary School
 - Walnut Hills Elementary School
 - Waukee Elementary School
 - Woodland Hills Elementary School
- 6-7 Attendance Centers:
 - South Middle School
 - Waukee Middle School
- 8-9 Attendance Centers:
 - Prairieview School
 - Timberline School
- 10-12 Attendance Centers:
 - Waukee High School
 - Northwest High School
 - Waukee Innovation & Learning Center (WILC)
- Specialized Programming:
 - Vince Meyer Learning Center (Preschool & 12+ Programming)

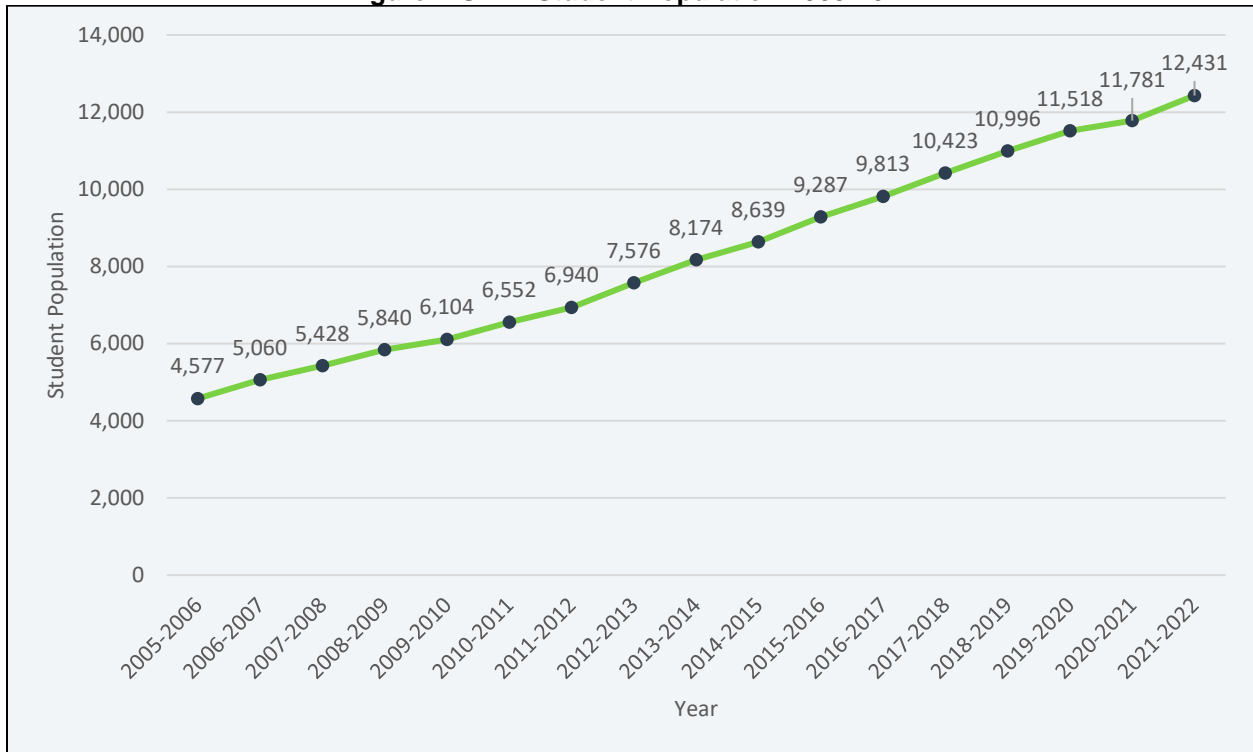
Demographics

The following figure displays the historical student population trend starting with the 2005-06 school year and ending with the 2021-2022 year. It indicates that the student population has rapidly increased since 2005. There are 12,431 students enrolled in the district.¹ The local planning team noted they expect an increase in student enrollment as the population of the City of Waukee has experienced exponential growth and the district's other communities served of Clive, West Des Moines, and Urbandale are also growing. Within the school district, 86.76% of students speak English, 2.5% speak Spanish, 1.99% Arabic, 1.38% Bosnian, 1.2% Telugu, 0.61% Chinese, 0.51% Tamil, and 0.5% Vietnamese. The remaining 5.0% of students speak a mixture of languages, most making up less than 0.1% of students. All notifications are available in a student's family's preferred language via the ParentSquare application. Emergency instructions and notifications are sent to families through ParentSquare and delivered by email, phone, and text messages.

¹ Iowa Department of Education. December 2021. "2021-2022 Iowa Public School Building PreK-12 Enrollments by School, Grade, Race and Gender." <https://educateiowa.gov/document-type/public-school-building-prek-12-enrollment-grade-race-and-gender>.

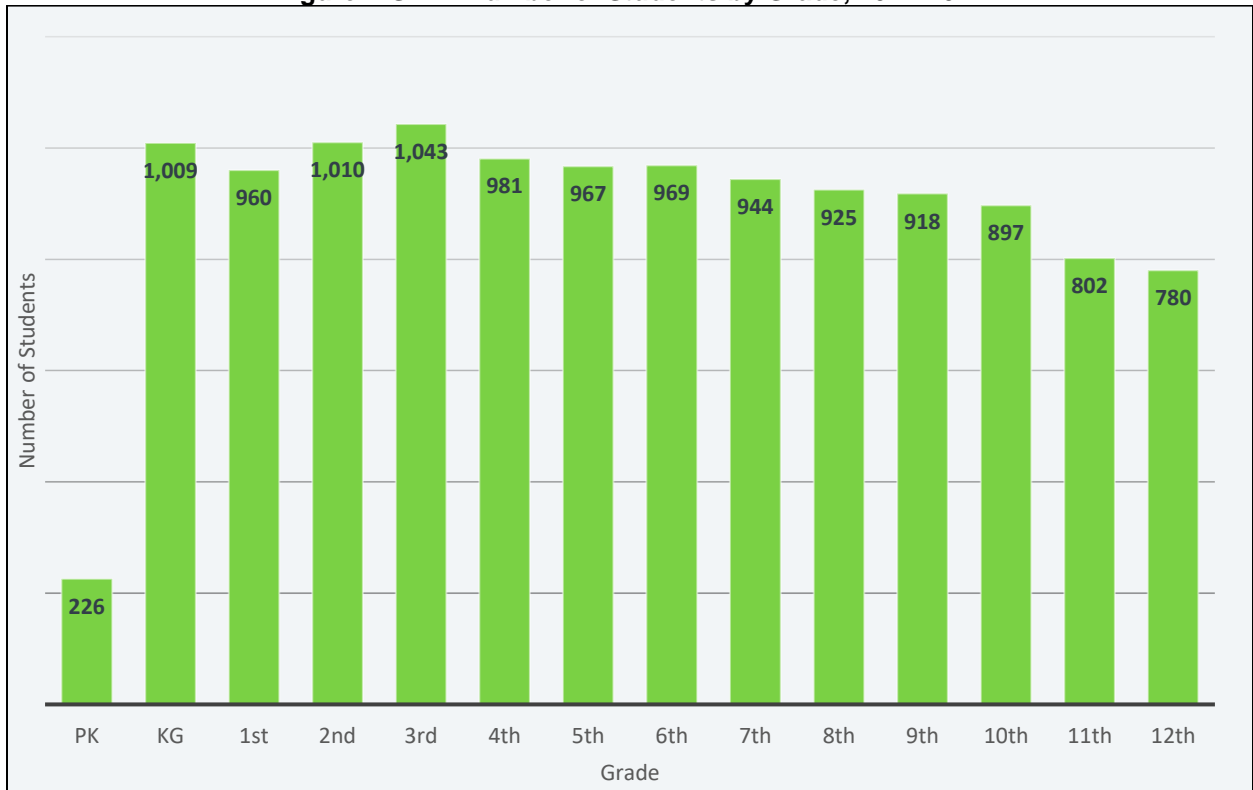
Section Seven: Waukee School District Profile

Figure WSD.1: Student Population 2005-2022



Source: Iowa Department of Education

Figure WSD.2: Number of Students by Grade, 2021-2022



Source: Iowa Department of Education

Figure WSD.3: Waukee School District

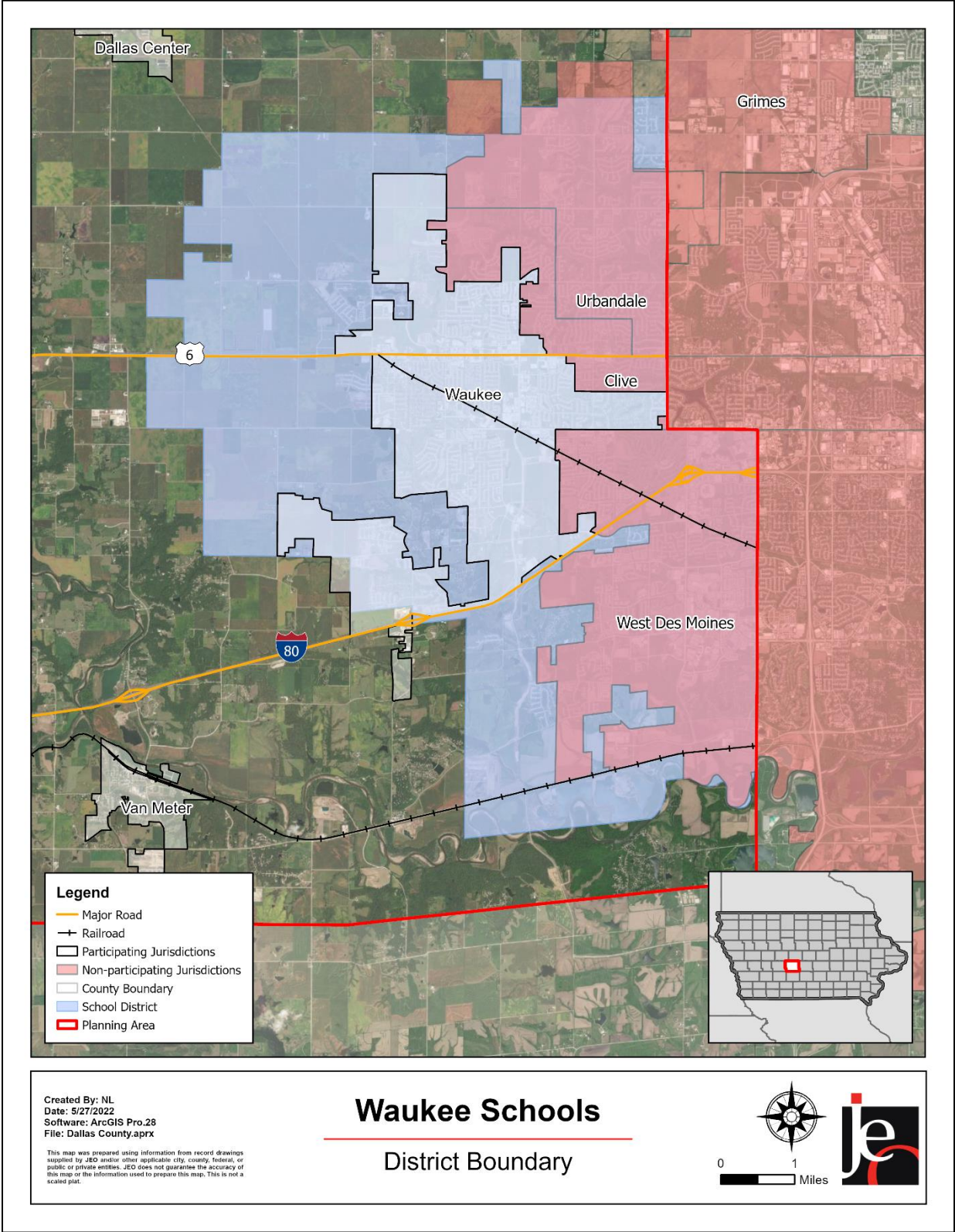


Figure WSD.2 indicates that the largest number of students are in Kindergarten, 2nd, and 3rd grades. The lowest number of students are in Pre-Kindergarten. According to the Iowa Department of Education, 16% of students receive either free or reduced priced meals at school. This is lower than the state average of 40.7%. Additionally, 8.5% of students are in the Special Education Program and 4.9% of students are English Language Learners. These particular students may be more vulnerable during a hazardous event than the rest of the student population.

Table WSD.2: K-12 Student Statistics, 2021-2022

	District	State of Iowa
Free/Reduced Priced Meals	16%	40.7%
Special Education Students	8.5%	13.2%
English Language Learners (ESL)	4.9%	6.6%

Source: Iowa Department of Education²

Administration and Staff

The school district has a superintendent, 16 principals, 11 assistant principals, and supportive staff. The school board is made up of a seven-member panel. There are a total of 2,229 employees with 936 of those are certified staff. District staff are required to perform emergency procedure training including annual online training and in-person building and director training. Email communications regarding district safety procedures and updates are consistently sent out. The district also has a number of additional departments and staff that may be available to implement hazard mitigation initiatives.

Capability Assessment

The capability assessment consisted of a review of local existing policies, regulations, plans, and programs with hazard mitigation capabilities. The following tables summarize the district’s planning and regulatory capability; administrative and technical capability; fiscal capability; educational and outreach capability; and overall capability to implement mitigation projects. Students and families are included in regular emergency procedure training and notified of all emergencies through the ParentSquare Notification System which pushed email, phone, and text messages in a family’s preferred language. The school district annually works with the Waukee Police Department to create age-appropriate training materials for active threat scenarios. Local police, EMS, and Fire Departments are allowed the use of school district buildings for training purposes.

² Iowa Department of Education. “Student Demographic Information.” Accessed April 2022. <https://educateiowa.gov/data-reporting/education-statistics-pk-12>

Table WSD.3: Capability Assessment

Survey Components/Subcomponents		Yes/No
Planning & Regulatory Capability	Facility Improvements Plan	Yes
	Continuity of Operations Plan	Yes
	Crisis Response Plan	Yes
	Strategic Plan	Yes
	Grant Manager	No
	Mutual Aid Agreement	No
	Other (if any)	
Fiscal Capability	Applied for grants in the past	Yes
	Awarded grants in the past	Yes
	Authority to levy taxes for specific purposes such as mitigation projects	No
	General Obligation Revenue or Special Tax Bonds	Yes
	Approved bonds in the past	Yes
	Flood Insurance	Yes
	Other (if any)	
Education & Outreach Capability	Local school groups or non-profit organizations focused on environmental protection, emergency preparedness, access, and functional needs populations, etc. (Ex. Parent groups, Crisis Response Teams, etc.)	Yes
	Hazard education or information program	No
	StormReady Certification	Yes
	Other (if any)	
Drills	Fire	4 / year
	Tornado	4 / year
	Intruder	1 / year
	Bus evacuation	2 / year
	Evacuation	0 / year
	Other (if any)	

Table WSD.4: Overall Capability

Overall Capability	Limited/Moderate/High
Financial resources needed to implement mitigation projects	Moderate
Staff/expertise to implement projects	Limited
Public support to implement projects	High
Time to devote to hazard mitigation	Moderate

Plan Integration

Grants and Funding

According to the local planning team, district funds are sufficient to pursue new capital projects. District funds have increased over recent years due to an increase in enrollment. WCSD has not applied for or been awarded any grants in the last five years.

Crisis Response Plan

The school district updates their Crisis Response Plan in an ongoing-annual basis. The Crisis Response Plan discusses natural hazards of fire, tornado, and chemical spills, addresses shelter in place protocols, and identifies the following: scenarios requiring evacuation, critical evacuation routes, and sheltering locations.

Future Development Trends

The major development trends having occurred in the last five years include the new Radiant Elementary School in 2019, the 2021 additions to Brookview Elementary, Eason Elementary, Vince Meyer Learning Center, the Timberline School Athletics building, the new build of Northwest High School, and the 2022 build of the Sugar Creek Elementary. Future construction plans for the school district include the Waukee CSD Natatorium in 2023, Trailridge School in 2023, Waterford Elementary in 2024, and North Middle School in 2025. All building codes, safe rooms, and backup generators have been considered for all new buildings planned. The school district gained 80 acres of land in 2020, 15 acres in 2022, and a district operation backup generator in 2022.

Community Lifelines

Transportation

According to the local planning team, there are no transportation routes of concern within the school district. The district leases buses from Durham Student Services which helped transport 6,270 students to and from school in the 2021-2022 school year.

Hazardous Materials

According to the Tier II System reports submitted to the Iowa Department of Natural Resources, there are 79 chemical storage sites in Clive, Urbandale, Waukee, and West Des Moines that contain hazardous chemicals.³ According to the planning team, if a chemical spill were to occur, officers and fire department officials would respond to secure the area while awaiting Des Moines Fire/Hazmat team and Dallas County Emergency Management to respond. An Anhydrous farm located between Waukee Middle School and Vince Meyer Learning Center is of most concern to the local planning team, however there are no known chemical spills to have occurred in the district.

Using location data for district buildings and chemical storage sites, an analysis was run to determine which schools have chemical sites within a one-mile radius. The results of this analysis can be seen in the table below.

³ Iowa Department of Natural Resources. 2022. "Emergency Response - Tier II Chemical Storage." Accessed April 2022. <https://facilityexplorer.iowadnr.gov/facilityexplorer/>.

Table WSD.5: School Buildings Within One Mile of Chemical Storage Sites

School Building	Address	# of Storage Sites Within One Mile
District Administration Office	560 SE University Ave Waukee, Iowa, 50263	3
Vince Meyer Learning Center	430 Ashworth Dr Waukee, Iowa, 50263	7
Grant Ragan Elementary School	645 NE Dartmoor Dr Waukee, IA 50263	1
Sugar Creek Elementary School	965 Ashworth Dr Waukee, Iowa, 50263	6
Waukee Elementary School	850 6th St Waukee, Iowa, 50263	7
South Middle School	2350 SE LA Grant Pkwy Waukee, IA 50263	1
Waukee Middle School	905 S Warrior Ln Waukee, Iowa, 50263	7
Prairieview School	655 SE University Ave Waukee, Iowa, 50263	2
Waukee High School	555 SE University Ave Waukee, Iowa, 50263	4
Northwest High School	655 10th St Waukee, Iowa, 50263	4
Brookview Elementary School	8000 EP True Pkwy West Des Moines, IA 50266	4
Woodland Hills Elementary School	1120 S 95th St West Des Moines, IA 50266	1

Critical Facilities

The local planning team identified critical facilities that are vital for disaster response, public shelter, and essential for returning the jurisdiction's functions to normal during and after a disaster per the FEMA Community Lifelines guidance. Critical facilities were identified during the original planning process and updated by the local planning team as a part of this plan update.

The following table and figure provide a summary of the critical facilities for the jurisdiction.

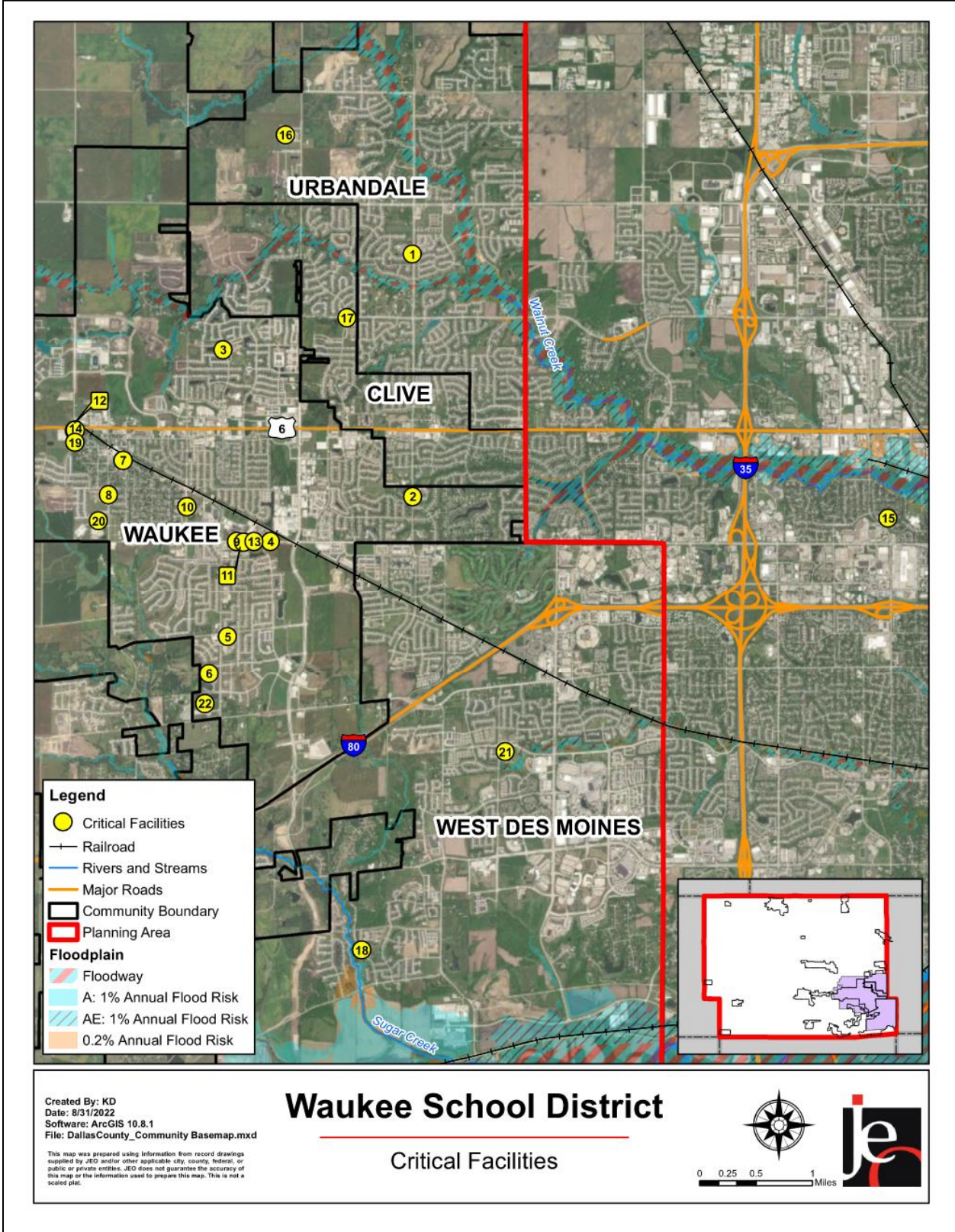
Table WSD.6: Critical Facilities

CF #	Name	Mass Care (Y/N)	Generator (Y/N)	Floodplain (Y/N)
1	Walnut Hills Elementary	N	N	N
2	Eason Elementary School	N	N	N
3	Grant Ragan Elementary School	N	N	N
4	Prairieview School	N	N	N
5	South Middle School	N	N	N
6	Timberline School	N	N	N
7	Vince Meyer Learning Center	N	N	N
8	Waukee Elementary School	N	N	N
9	Waukee High School	N	N	N
10	Waukee Middle School	N	N	N
11	Waukee School District Administration Office	N	N	N

Section Seven: Waukee School District Profile

CF #	Name	Mass Care (Y/N)	Generator (Y/N)	Floodplain (Y/N)
12	Waukee Stadium	N	N	N
13	WCSD Transportation	N	N	N
14	Sugar Creek Elementary	N	N	N
15	Maple Grove Elementary	N	N	N
16	Radiant Elementary	N	N	N
17	Shuler Elementary School	N	N	N
18	Woodland Hills Elementary School	N	N	N
19	Northwest High School	N	Y	N
	Northwest High School Stadium	N	Y	N
20	WCSD Operations	N	Y	N
21	Brookview Elementary School	N	N	N
22	Timberline Athletic Complex	N	N	N

Figure WSD.4: Map of Critical Facilities



Historical Occurrences

See the profile for the City of Waukee for historical hazard events.

Hazard Prioritization

The hazards discussed in detail below were selected by the local planning team from the county hazard list as the relevant hazards for the jurisdiction. The selected hazards were prioritized by the local planning team based on historical hazard occurrences, potential impacts, and the community's capabilities. For additional discussion regarding area-wide hazards, please see *Section Four: Risk Assessment*.

Terrorism & Civil Unrest

While the Waukee School District has not experienced instances of terrorism and civil unrest in the past, this hazard has been identified as a concern based on the current culture of unrest nationwide. The schools perform intruder drills annually and the district updates its Crisis Response Plan on a yearly basis. The Crisis Response Plan includes protocols for sheltering in place.

Tornado and Windstorm

Tornado and Windstorm was identified as a top hazard of concern for the school district. Maintaining the safety of students and staff is the top priority for the district, followed by ensuring the security of school district property. Over the past the years, three derechos and two spotted tornadoes have occurred on or near school property. The school district experienced approximately \$100,000 in damage from the 2021 derecho at the Northwest High School. To mitigate potential injuries or deaths due to tornado events, the school district has safe rooms or storm shelters at the following facilities: Eason Elementary, Brookview Elementary, Sugar Creek Elementary, Vince Meyer Learning Center, Prairieview School, and Northwest High School. The school district is implementing safe rooms and storm shelters at four other facilities in the next five years including Trailridge School, Waterford Elementary, Waukee Innovation and Learning Center, and North Middle School.

Transportation Incident

The Waukee School District experiences a minimal amount of bus accidents over the past three years, with most occurrences being minor accidents with no injuries. The district experienced a major accident in 2019 when a bus driver had a medical emergency that incapacitated him. The accident resulted in the total loss of the bus, but no students were injured, and the driver recovered from his injuries and was cleared to resume driving.

Mitigation Strategy

Continued Mitigation and Strategic Actions

Mitigation Action	Safe Rooms
Description	Construct safe rooms adjacent to existing school buildings and/or incorporate safe rooms in the design of new school buildings.
Hazard(s)	All hazards
Estimated Cost	\$100,000 to \$500,000
Funding	HMA
Timeline	3-5 years
Priority	High
Lead Agency	Operations Department
Status	Safe rooms have been added during the additions to Vince Meyer Early Learning Center, Eason Elementary, Brookview Elementary, and Prairieview School, as well as in the new/remodeled Northwest High School and Sugar Creek Elementary. Planned additional safe rooms at Trailridge School, Waukee Innovation and Learning Center, Waterford Elementary, and North Middle School.

Plan Maintenance

Hazard Mitigation Plans should be living documents and updated regularly to reflect changes in hazard events, priorities, and mitigation actions. These updates are encouraged to occur after every major disaster event, alongside planning documents (e.g., annual budgets, etc.), during the fall before the HMA grant cycle begins, and/or prior to other funding opportunity cycles begin.

The local planning team is responsible for reviewing and updating this profile as changes occur or after a major event. The last update occurred between May and July 2022 when hazards of concern were added, building profiles updated, and new construction updated. The local planning team will include the Director of Instructional Services, the Chief Operating Officer, the Chief Financial Officer, the Executive Director of Human Resources, and the Executive Director of Communications. The plan will be reviewed annually, and the public will be included in the review and revision process via the school district’s annual notification process.