

School District Profile

Perry Community School District

**Dallas County
Hazard Mitigation Plan 2023**

Local Planning Team

Table PSD.1: Perry School District Local Planning Team

Name	Title	Jurisdiction
Linda Andorf	Board President	PCSD
Clark Wicks	Superintendent	PCSD
Matt Hix	Building and Grounds	PCSD

Location and Services

Perry Community School District is located in Dallas County, approximately 25 miles northwest of Des Moines. The district serves the communities of Bouton, Dawson, and Perry. The district’s mission, as expressed on its website, states “To develop knowledgeable, skilled, and productive citizens of character.” The district is comprised of three schools: Perry High School, Perry Middle School, and Perry Elementary. The district’s predominant language is English, but Spanish, Tigrinya, and Dinka are also spoken. Opt-in services are provided for students at St. Patrick’s School.

Demographics

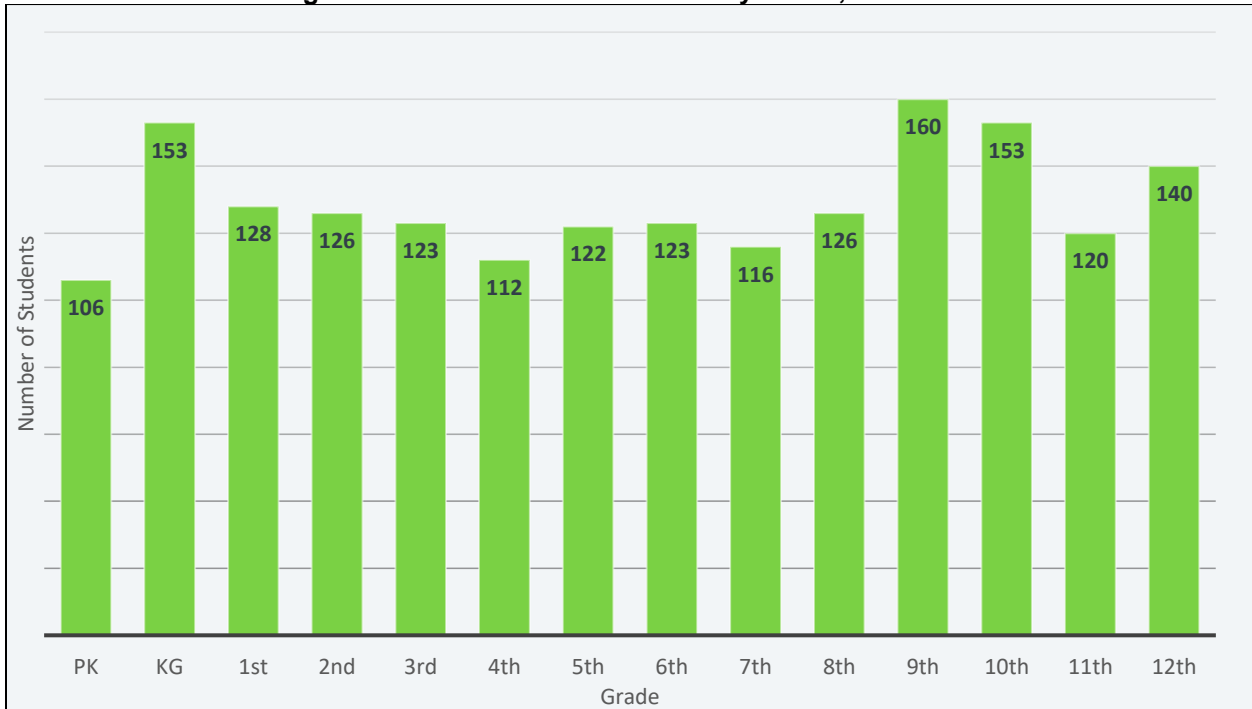
The following figure displays the historical student population trend starting with the 2005-06 school year and ending with the 2021-2022 year. It indicates that the student population has fluctuated in recent years. The local planning team noted they expect little to no change in student enrollment as the population of Perry is not growing. There are 1,808 students enrolled in the district.¹ Aside from English, students in the school district speak Spanish. Emergency instructions or notices are available in Spanish.

¹ Iowa Department of Education. December 2021. “2021-2022 Iowa Public School Building PreK-12 Enrollments by School, Grade, Race and Gender.” <https://educateiowa.gov/document-type/public-school-building-prek-12-enrollment-grade-race-and-gender>.

Figure PSD.1: Student Population 2005-2022



Figure PSD.2: Number of Students by Grade, 2021-2022



Source: Iowa Department of Education

Figure PSD.3: Perry School District

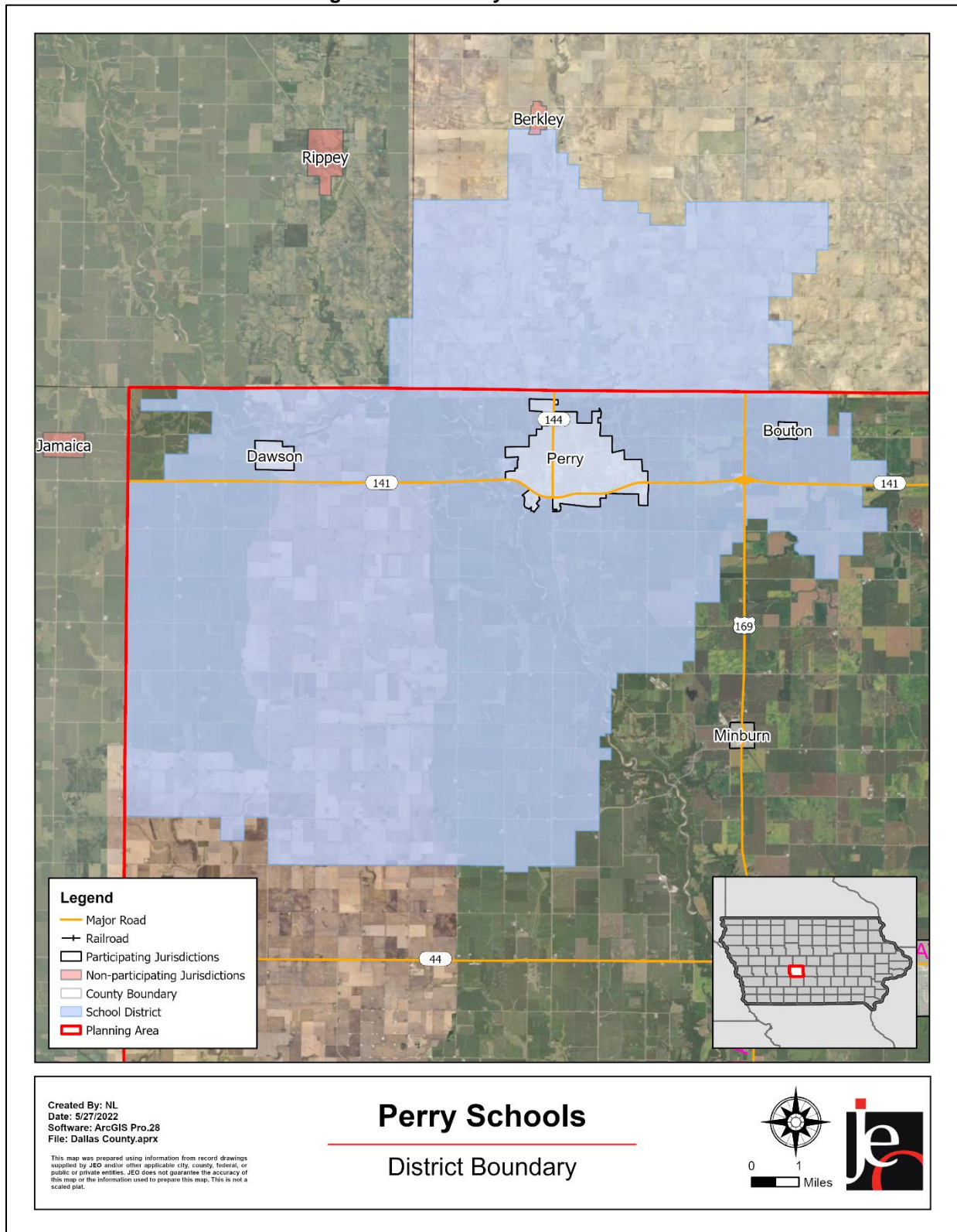


Figure PSD.2 indicates that the largest number of students are in Kindergarten, 9th, and 10th grades. The lowest number of students are in Pre-Kindergarten. According to the Iowa Department of Education, 49.1% of students receive either free or reduced priced meals at school. This is higher than the state average of 40.7%. Additionally, 9.3% of students are in the Special Education Program and 20.9% of students are English Language Learners. These particular students may be more vulnerable during a hazardous event than the rest of the student population.

Table PSD.2: K-12 Student Statistics, 2021-2022

	District	State of Iowa
Free/Reduced Priced Meals	49.1%	40.7%
Special Education Students	14.7%	13.2%
English Language Learners (ESL)	20.9%	6.6%

Source: Iowa Department of Education²

Administration and Staff

The school district has a superintendent, three principals, three assistant principals, and supportive staff. The school board is made up of a five-member panel. There are 300 total teachers and staff members employed by the district. The district has a number of additional departments and staff, including law enforcement, fire department, and city departments that may be available to implement hazard mitigation initiatives. District staff is trained annually in emergency procedures.

Capability Assessment

The capability assessment consisted of a review of local existing policies, regulations, plans, and programs with hazard mitigation capabilities. The following tables summarize the district's planning and regulatory capability; administrative and technical capability; fiscal capability; educational and outreach capability; and overall capability to implement mitigation projects. Students and families are provided with the student handbook and district website where emergency procedures are outlined. Parents and staff are notified of emergency events through a notification system, emails, and social media. Notifications are available in all languages that district students speak. The school district partners with local fire and police departments for exercises in emergency procedures.

² Iowa Department of Education. "Student Demographic Information." Accessed April 2022. <https://educateiowa.gov/data-reporting/education-statistics-pk-12>

Table PSD.3: Capability Assessment

Survey Components/Subcomponents		Yes/No
Planning & Regulatory Capability	Facility Improvements Plan	Yes
	Continuity of Operations Plan	Yes
	Crisis Response Plan	Yes
	Strategic Plan	Yes
	Grant Manager	Yes
	Mutual Aid Agreement	No
	Other (if any)	No
Fiscal Capability	Applied for grants in the past	No
	Awarded grants in the past	No
	Authority to levy taxes for specific purposes such as mitigation projects	No
	General Obligation Revenue or Special Tax Bonds	Yes
	Approved bonds in the past	No
	Flood Insurance	No
	Other (if any)	No
Education & Outreach Capability	Local school groups or non-profit organizations focused on environmental protection, emergency preparedness, access, and functional needs populations, etc. (Ex. Parent groups, Crisis Response Teams, etc.)	Yes
	Hazard education or information program	No
	StormReady Certification	No
	Other (if any)	No
Drills	Fire	4 / year
	Tornado	2 / year
	Intruder	1 / year
	Bus evacuation	1 / year
	Evacuation	1 / year
	Other (if any)	No

Table PSD.4: Overall Capability

Overall Capability	Limited/Moderate/High
Financial resources needed to implement mitigation projects	Moderate
Staff/expertise to implement projects	Moderate
Public support to implement projects	Moderate
Time to devote to hazard mitigation	Moderate

Plan Integration

Grants and Funding

According to the local planning team, district funds are limited to maintaining current facilities and systems. District funds have increased in recent years due to enrollment. PCSD has not applied for or been awarded any grants in the last five years.

Crisis Response Plan

The school district uses a Crisis Response Plan to react to hazardous events. The Crisis Response Plan discusses natural hazards, addresses shelter in place protocols, and identifies the following: scenarios requiring evacuation, critical evacuation routes, sheltering locations, opportunities for mitigation following an event, and any gaps related to particular hazards. The plan is updated annually as needed.

Future Development Trends

The major developments to occur in the last five years the demolition of the old football press box, the addition of solar panels, added on with two new buildings, the reroofing of buildings, a new track surface, and the addition of some new RTU's. Currently, the elementary school kitchen is undergoing renovations. The school district acquired new HVAC systems over the past five years.

Community Lifelines

Transportation

According to the local planning team, routes that may be flooded or snow impacted roads are of the most concern to the school district. To date, no major accidents have impacted schools within the district. PCSD owns 18 school buses and approximately 700 students are bused to and from school each day.

Hazardous Materials

According to the Tier II System reports submitted to the Iowa Department of Natural Resources, there are 15 chemical storage sites in Perry that contain hazardous chemicals. According to the planning team, no chemical spills have impacted the schools and the Fire Department would be the first to respond in the event of a spill.

Section Seven: Perry School District Profile

Table PSD.5: Chemical Storage Sites

Facility Name	Address	Located in Floodplain?
CenturyLink - Perry CO	1424 Willis Avenue Perry, IA 50220	No
CIRM-- Perry Plant	915 Railroad Street Perry, IA 50220	No
Dallas County Hospital	610 10th St. Perry, IA 50220	No
ITC Midwest Perry	1400 I Court Perry, IA 50220	1% Floodplain
Landus Cooperative - Perry	2229 Clover Ave Perry, IA 50220	No
Minburn Telephone Company - CLEC	923 Willis Ave Perry, IA 50220	No
Perry	104 Willis Avenue Perry, IA 50220	No
Perry Maintenance Building	205 South First Street Perry, IA 50220	No
Perry Municipal Water Works	1101 W Third Street Perry, IA 50220	No
Perry Willis	910 I Court Perry, IA 50220	1% Floodplain
Progressive Foundry Inc	1518 1st Ave Perry, IA 50220	No
Quick Oil Co	104 Willis Avenue Perry, IA 50220	No
Star Energy FS - A Division Of Growmark Inc. - Perry	296 335th Street Perry, IA 50220	No
Tyson Fresh Meats Inc	13500 I Court Drive Perry, IA 50220	1% Floodplain
Wiese Industries	1501 5th Street Perry, IA 50220	No

Source: Iowa Department of Natural Resources³

Using location data for district buildings and chemical storage sites, an analysis was run to determine which schools have chemical sites within a one-mile radius. The results of this analysis can be seen in the table below.

³ Iowa Department of Natural Resources. 2022. "Emergency Response - Tier II Chemical Storage." Accessed April 2022. <https://facilityexplorer.iowadnr.gov/facilityexplorer/>.

Table PSD.6: School Buildings Within One Mile of Chemical Storage Sites

School Building	Address	# of Storage Sites Within One Mile
District Office	1102 Willis Ave Perry, Iowa, 50220	10
Perry High School	1200 18th Street Perry, IA 50220	1
Perry Middle School	1200 18th Street Perry, IA 50220	1
Perry Elementary School	1600 8th St Perry, Iowa, 50220	7

Critical Facilities

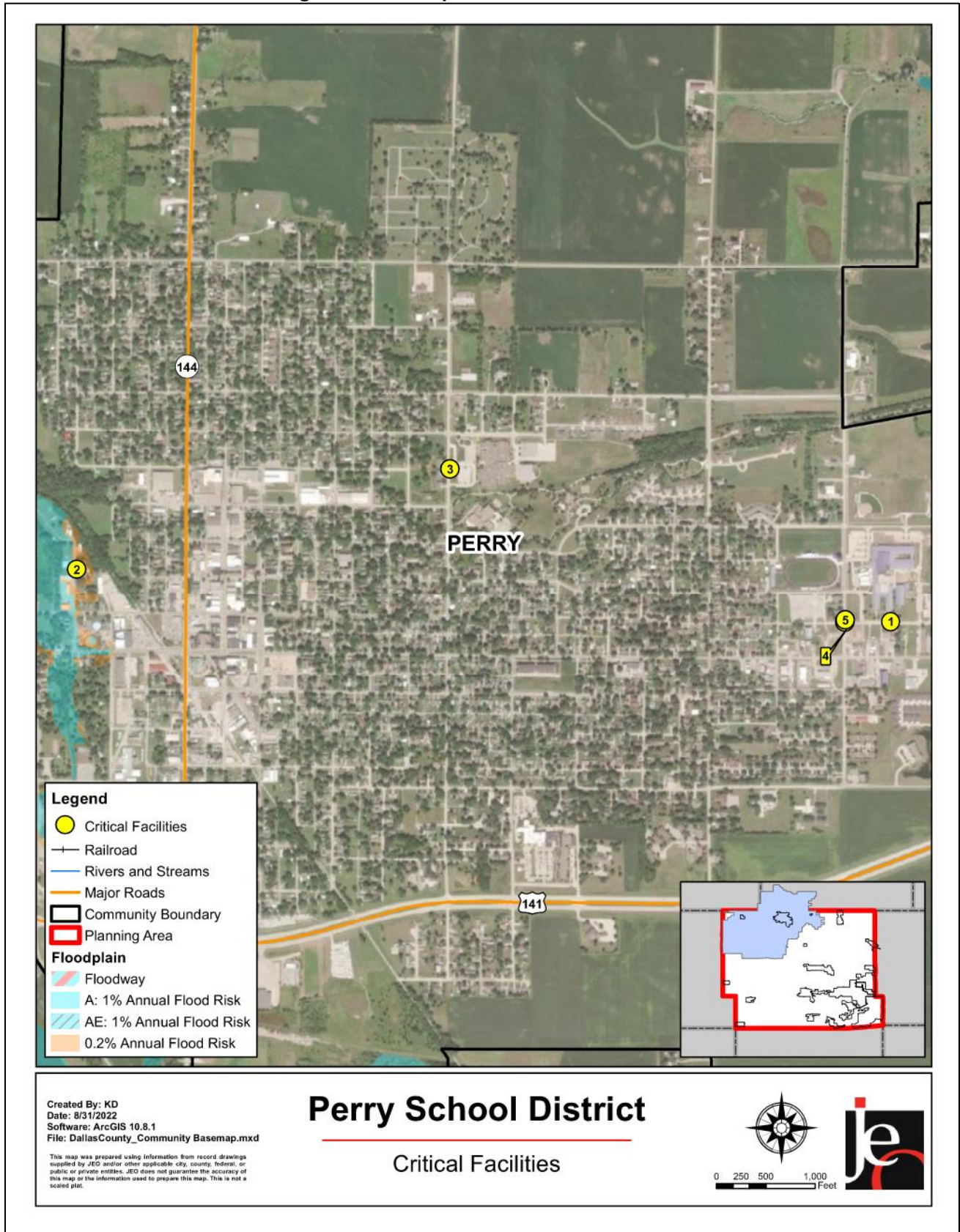
The local planning team identified critical facilities that are vital for disaster response, public shelter, and essential for returning the jurisdiction’s functions to normal during and after a disaster per the FEMA Community Lifelines guidance. Critical facilities were identified during the original planning process and updated by the local planning team as a part of this plan update.

The following table and figure provide a summary of the critical facilities for the jurisdiction.

Table PSD.7: Critical Facilities

CF #	Name	Mass Care (Y/N)	Generator (Y/N)	Floodplain (Y/N)
1	Perry Community School District Bus Garage	N	N	N
2	Perry Community School District Maintenance Shop	N	N	N
3	Perry Elementary School	N	N	N
4	Perry Middle School	N	N	N
5	Perry High School	N	N	N

Figure PSD.4: Map of Critical Facilities



Historical Occurrences

See the community profile for the City of Perry for historical hazard events.

Hazard Prioritization

The hazards discussed in detail below were selected by the local planning team from the county hazard list as the relevant hazards for the jurisdiction. The selected hazards were prioritized by the local planning team based on historical hazard occurrences, potential impacts, and the community's capabilities. For additional discussion regarding area-wide hazards, please see *Section Four: Risk Assessment*.

Extreme Temperatures

Concerns associated with extreme temperatures as noted by the local planning team include pipe breakage, loss of heat, and loss of cooling units. According to the local planning team, the school district has experienced water pipe bursts due to pipes freezing.

Severe Thunderstorms (Includes Hail and Lightning)

This hazard was identified as a top hazard of concern for the school district due mainly to power outages that result in loss of lights, security, cooling, heat, and may lead to food spoilage. The school district has sustained damage due to thunderstorms and hail in the past including roof damage causing water leaks, structural damage to the outside property, power outages, and lightning strikes causing power surges to electrical equipment. To reduce the risk of severe thunderstorms the school district makes use of weather alerts provided by both the county and local authorities and all buildings within the district are equipped with weather alert radios. To reduce future risk to future damages, the local planning team would like to install backup generators to all facilities.

Severe Winter Storms

Power outages and transportation impacts are the main concerns for this hazard, according to the planning team. Student drivers can especially be impacted to winter weather conditions due to their lack of driving experience. According to the local planning team, heavy snow and ice storms are regular occurrences with gutter damage having occurred to critical facilities within the school district. The worst occurrence happening in the late 1990s when gravel roads were shut down around the county for a week due to a significant snow event. During that time buses were not able to pick up students.

Tornado and Windstorm

Tornado and Windstorm was identified as a top hazard of concern for the school district. The result of this hazard may cause structure failure or complete loss, power outages, and even injuries or fatalities. The school district has experienced roof damage to various structures, tree damage, and damage to fencing and signage from the August 2020 and December 2021 Derechos.

Mitigation Strategy

Continued Mitigation and Strategic Actions

Mitigation Action	Backup Generators
Description	Purchase generators for district buildings
Hazard(s)	All hazards
Estimated Cost	\$150,000 (3 generators)
Funding	District Facility Funds, HMA
Timeline	4 years
Priority	High
Lead Agency	Administration and Building & Grounds
Status	The school district is obtaining pricing and looking at the district's budget.

Plan Maintenance

Hazard Mitigation Plans should be living documents and updated regularly to reflect changes in hazard events, priorities, and mitigation actions. These updates are encouraged to occur after every major disaster event, alongside planning documents (e.g., annual budgets, etc.), during the fall before the HMA grant cycle begins, and/or prior to other funding opportunity cycles begin.

The local planning team is responsible for reviewing and updating this profile as changes occur or after a major event. The local planning team will include the Superintendent and the Director of Buildings and Grounds. The plan will be reviewed bi-annually, and the public will be included in the review and revision process via social media, website updates, and call notifications.