

## School District Profile

# **Dallas Center-Grimes School District**

**Dallas County  
Hazard Mitigation Plan 2023**

## Local Planning Team

Table DCG.1: Dallas Center-Grimes School District Local Planning Team

Name	Title	Jurisdiction
Scott Grimes	Superintendent	DCG Schools
Paul Nutting	Director of Buildings and Grounds	DCG Schools

## Location and Services

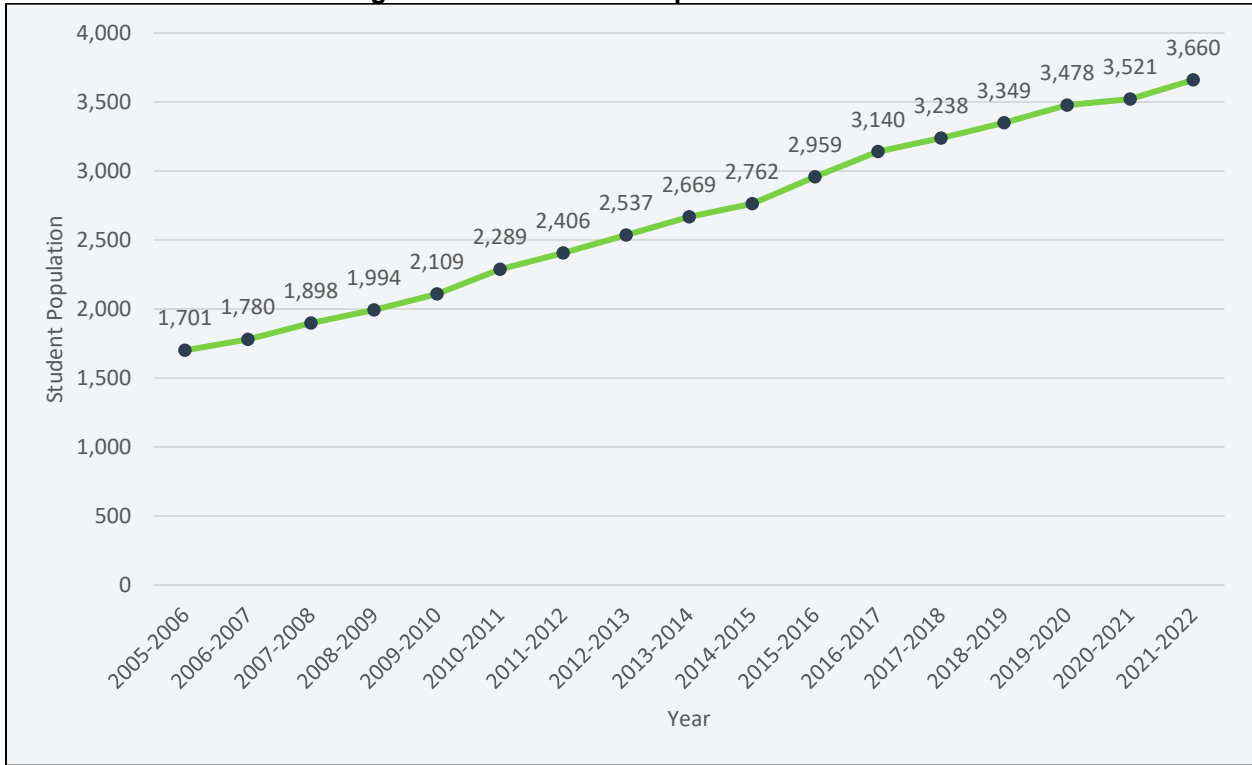
Dallas Center-Grimes (DCG) School District is located in Dallas and Polk Counties, northwest of Des Moines. The district's mission, as expressed on its website, states "Empowering All Students to Take Charge of Their Future!" The district is comprised of eight schools – two in the City of Dallas Center and six in the City of Grimes. The two in Dallas Center include: Dallas Center Elementary and DCG Middle School. The six in Grimes include: DCG High School, DCG Oak View, Heritage Elementary, South Prairie Elementary, North Ridge Elementary, and Preschool. The district office is located in Grimes. English is the predominant language in the district, but Spanish, Bosnian, and Chinese are also spoken.

## Demographics

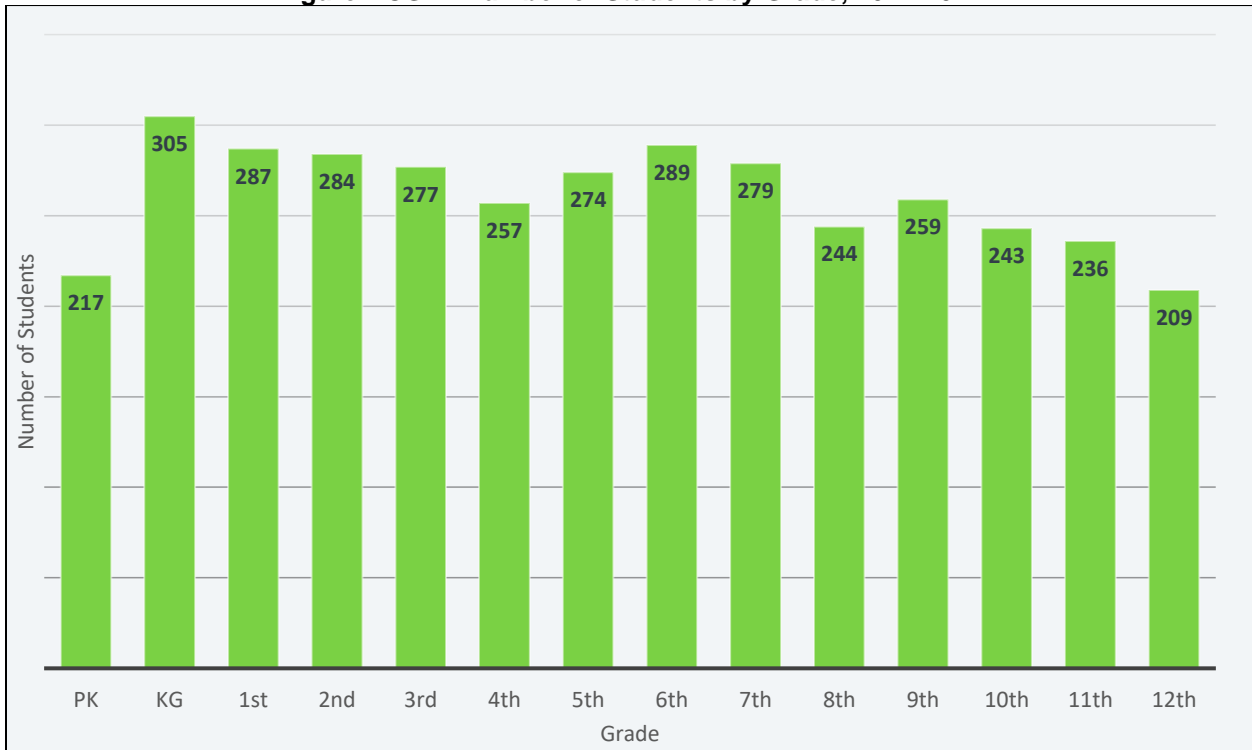
The following figure displays the historical student population trend starting with the 2005-06 school year and ending with the 2021-2022 year. It indicates that the student population has steadily increased since 2005. The local planning team noted seeing a consistent increase in enrollment over the past five years due to community growth in Grimes and Dallas Center. The increase is expected to continue. There are 3,660 students enrolled in the district.<sup>1</sup>

<sup>1</sup> Iowa Department of Education. December 2021. "2021-2022 Iowa Public School Building PreK-12 Enrollments by School, Grade, Race and Gender." <https://educateiowa.gov/document-type/public-school-building-prek-12-enrollment-grade-race-and-gender>.

**Figure DCG.1: Student Population 2005-2022**



**Figure DCG.2: Number of Students by Grade, 2021-2022**



Source: Iowa Department of Education

Figure DCG.3: Dallas Center-Grimes School District

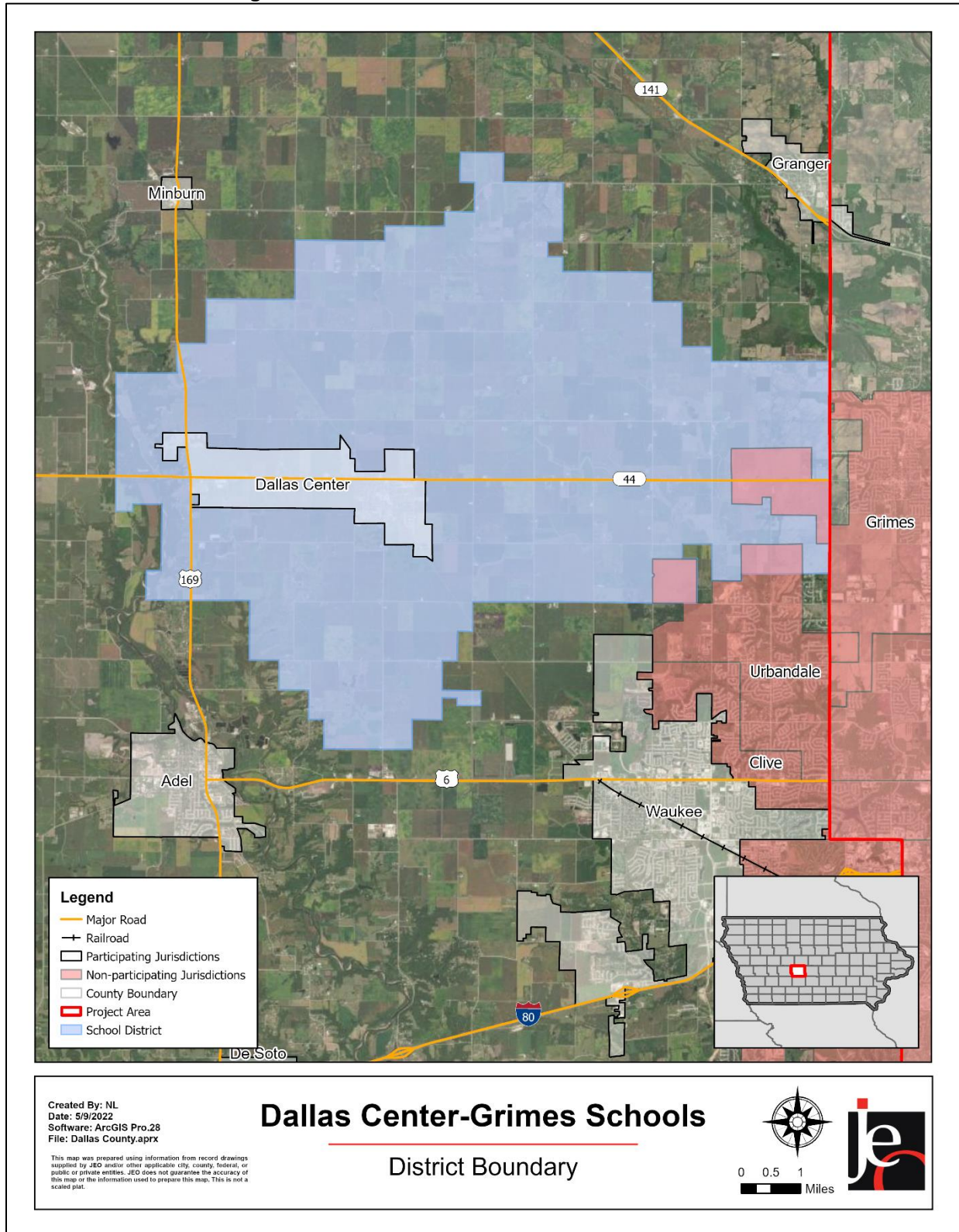


Figure DCG.2 indicates that the largest number of students are in Kindergarten, 1<sup>st</sup> grade, and 6<sup>th</sup> grades. The lowest number of students are in Pre-Kindergarten. According to the Iowa Department of Education, 14.2% of students receive either free or reduced priced meals at school. This is lower than the state average of 40.7%. Additionally, 9.2% of students are in the Special Education Program and 0.9% of students are English Language Learners. These particular students may be more vulnerable during a hazardous event than the rest of the student population.

**Table DCG.2: K-12 Student Statistics, 2021-2022**

	District	State of Iowa
Free/Reduced Priced Meals	14.2%	40.7%
Special Education Students	9.2%	13.2%
English Language Learners (ESL)	0.9%	6.6%

Source: Iowa Department of Education<sup>2</sup>

## Administration and Staff

The school district has a superintendent, seven principals, one assistant principals, nine members in the administrative cabinet, and supportive staff. The school board is made up of a seven-member panel. The district employs 552 staff members. The district’s Buildings and Grounds department, Safety Committee, and a number of additional departments and staff may be available to implement hazard mitigation initiatives. The district trains its staff on emergency procedures through both tabletop and live trainings.

## Capability Assessment

The capability assessment consisted of a review of local existing policies, regulations, plans, and programs with hazard mitigation capabilities. The following tables summarize the district’s planning and regulatory capability; administrative and technical capability; fiscal capability; educational and outreach capability; and overall capability to implement mitigation projects. Emergency procedures are discussed with students in each enrolled class at the start of each semester. Once a year the fire department will assist with fire drills and the Grimes Fire Department is present during Fire Prevention Week. Information on emergency procedures is shared with families through newsletters, emails, and social media. In the event of an emergency, the district notifies parents and staff through various methods including email and the mass communication system ThrillShare. Notifications are done in English but can be done in other languages when necessary.

<sup>2</sup> Iowa Department of Education. “Student Demographic Information.” Accessed April 2022. <https://educateiowa.gov/data-reporting/education-statistics-pk-12>

Section Seven: Dallas Center-Grimes School District Profile

**Table DCG.3: Capability Assessment**

Survey Components/Subcomponents		Yes/No
<b>Planning &amp; Regulatory Capability</b>	Facility Improvements Plan	Yes
	Continuity of Operations Plan	Yes
	Crisis Response Plan	Yes
	Strategic Plan	Yes
	Grant Manager	No
	Mutual Aid Agreement	No
	Other (if any)	
<b>Fiscal Capability</b>	Applied for grants in the past	No
	Awarded grants in the past	No
	Authority to levy taxes for specific purposes such as mitigation projects	No
	General Obligation Revenue or Special Tax Bonds	Yes
	Approved bonds in the past	Yes
	Flood Insurance	Yes
	Other (if any)	
<b>Education &amp; Outreach Capability</b>	Local school groups or non-profit organizations focused on environmental protection, emergency preparedness, access, and functional needs populations, etc. (Ex. Parent groups, Crisis Response Teams, etc.)	Yes
	Hazard education or information program	No
	StormReady Certification	No
	Other (if any)	
<b>Drills</b>	Fire	4 / year
	Tornado	4 / year
	Intruder	1 / year
	Bus evacuation	2 / year
	Evacuation	1 / year
	Other (if any)	

**Table DCG.4: Overall Capability**

Overall Capability	Limited/Moderate/High
Financial resources needed to implement mitigation projects	Limited
Staff/expertise to implement projects	Moderate
Public support to implement projects	High
Time to devote to hazard mitigation	Low

## Plan Integration

### Grants and Funding

According to the local planning team, district funds have been sufficient to both pursue new capital projects and to maintain facilities and systems. A large portion of funds is currently dedicated to the renovations of the DCG high school campus. District funds have increased in recent years due to bonding and increase in county taxes. No grants have been applied for or awarded to the district within the past five years.

### Crisis Response Plan

The school district uses a Crisis Response Plan to react to hazardous events. The Crisis Response Plan discusses natural hazards, addresses shelter in place protocols, and identifies scenarios requiring evacuation and critical evacuation routes. This plan will be reviewed and updated during the 2022-2023 school year.

## Future Development Trends

Over the last five years, the school district has built a new building at Oak View for seventh and eighth grade. Currently the school district is renovating the DCG High School campus. Building Codes, safe rooms, and backup generators have all been considered for the High School's renovation and will be updated as needed.

## Community Lifelines

### Transportation

According to the local planning team, no transportation routes are of high concern. To date no major accidents have impacted schools within the district. DCG owns 36 buses and approximately 2,300 students are bused to and from school each day.

### Hazardous Materials

According to the Tier II System reports submitted to the Iowa Department of Natural Resources, there are two chemical storage sites in Dallas Center and 16 sites in Grimes that contain hazardous chemicals. According to the local planning team, while no chemical spills have impacted the schools, the Director of Buildings and Grounds as well as the local building supervisors would be the first to respond if a chemical spill were to occur.

**Table DCG.5: Chemical Storage Sites**

Facility Name	Address	Located in Floodplain?
<b>Corteva Dallas Center</b>	205 Fair View Dr Dallas Center, IA 50063	No
<b>Heartland Co-op - Dallas Center</b>	1107 Sycamore Street Dallas Center, IA 50063	No
<b>Arctic Glacier USA Inc.</b>	1300 SE Little Beaver Dr Grimes, IA 50111	No
<b>CenturyLink - Grimes CDO</b>	109 S Main Street Grimes, IA 50111	No
<b>CIRM--Grimes Plant</b>	1301 SE 37th Street Grimes, IA 50111	No
<b>Composites One LLC - Grimes</b>	3450 SE Gateway Drive Grimes, IA 50111	No

Section Seven: Dallas Center-Grimes School District Profile

<b>Citi Plant 2</b>	3150 SE Meihe Drive Grimes, IA 50111	No
<b>Grimes</b>	5423 NW 100th Grimes, IA 50111	No
<b>Grimes DT</b>	304 S 1st Street Grimes, IA 50111	No
<b>Grimes Water Supply</b>	1801 N James Street Grimes, IA 50111	1% Floodplain
<b>Iowa DOT Grimes Maintenance Garage</b>	2310 SE 17th Street Grimes, IA 50111	No
<b>Liberty Ready Mix Plant 1</b>	5002 Beisser Drive Grimes, IA 50111	No
<b>MAPEI</b>	3555 SE Crossroads Drive #2 Grimes, IA 50111	No
<b>Matheson/Grimes ASU</b>	1255 SW Brookside Circle Grimes, IA 50111	No
<b>MidAmerican Energy - Grimes Substation</b>	1651 SW 37th Street Grimes, IA 50111	No
<b>Norwalk--Grimes Ready Mix</b>	4005 SE Beisser Drive Grimes, IA 50111	No
<b>Owens &amp; Minor - DC 48</b>	1601 SE Gateway Drive Grimes, IA 50111	No
<b>United Contractors Inc. – Grimes Recycle Yard</b>	3101 SW Brookside Drive Grimes, IA 50111	No

Source: Iowa Department of Natural Resources<sup>3</sup>

Using location data for district buildings and chemical storage sites, an analysis was run to determine which schools have chemical sites within a one-mile radius. The results of this analysis can be seen in the table below.

**Table DCG.6: School Buildings Within One Mile of Chemical Storage Sites**

<b>School Building</b>	<b>Address</b>	<b># of Storage Sites Within One Mile</b>
<b>Heritage Elementary</b>	500 NE Beaverbrooke Blvd Grimes, Iowa, 50111	3
<b>South Prairie Elementary</b>	500 S James St Grimes, Iowa, 50111	3

<sup>3</sup> Iowa Department of Natural Resources. 2022. "Emergency Response - Tier II Chemical Storage." Accessed April 2022. <https://facilityexplorer.iowadnr.gov/facilityexplorer/>.



**Critical Facilities**

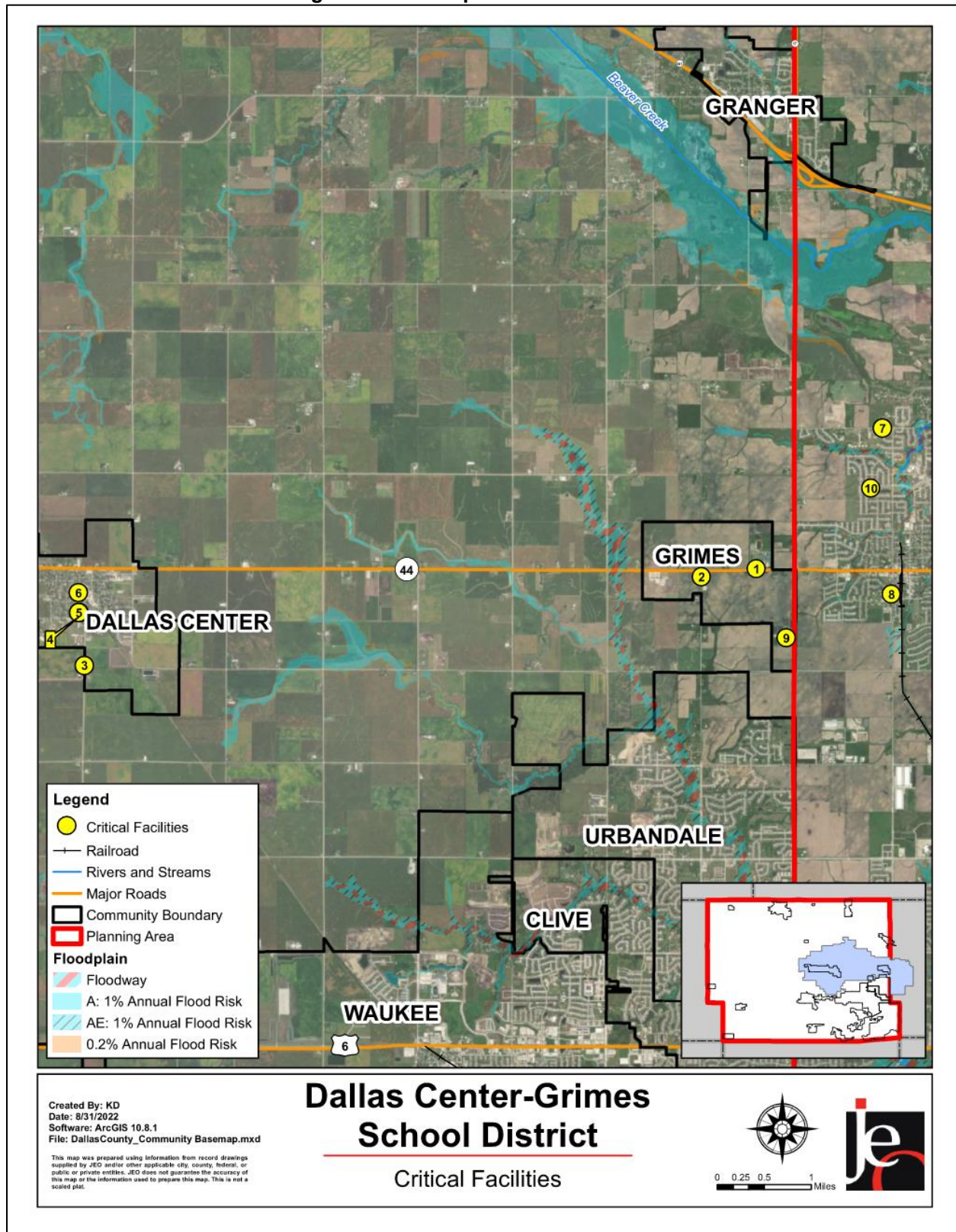
The local planning team identified critical facilities that are vital for disaster response, public shelter, and essential for returning the jurisdiction’s functions to normal during and after a disaster per the FEMA Community Lifelines guidance. Critical facilities were identified during the original planning process and updated by the local planning team as a part of this plan update.

The following table and figure provide a summary of the critical facilities for the jurisdiction.

**Table DCG.7: Critical Facilities**

<b>CF #</b>	<b>Name</b>	<b>Mass Care (Y/N)</b>	<b>Generator (Y/N)</b>	<b>Floodplain (Y/N)</b>
1	Dallas Center-Grimes High School	Y	Y	N
2	Dallas Center-Grimes School District Transportation Building	N	N	N
3	Dallas Center-Grimes Elementary School	Y	Y	N
4	Dallas Center-Grimes Middle School	Y	Y	N
5	Dallas Center-Grimes Middle School Athletic Complex	N	N	N
6	Dallas Center-Grimes School District Administration Building	N	Y	N
7	North Ridge Elementary School	Y	Y	N
8	South Prairie Elementary School	Y	Y	N
9	Oak View School	Y	Y	N
10	Heritage Elementary/Preschool	Y	Y	N

Figure DCG.4: Map of Critical Facilities



## Historical Occurrences

See the community profile for the City of Dallas Center for historical hazard events.

## Hazard Prioritization

The hazards discussed in detail below were selected by the local planning team from the county hazard list as the relevant hazards for the jurisdiction. The selected hazards were prioritized by the local planning team based on historical hazard occurrences, potential impacts, and the community’s capabilities. For additional discussion regarding area-wide hazards, please see *Section Four: Risk Assessment*.

### Severe Thunderstorms (Includes Hail and Lightning)

This hazard was identified as a top hazard of concern for the school district due mainly to the possibility of power outages and exterior damage. In past thunderstorm events, the school district has experienced damage to roof and roof membranes. The county offers text alerts for severe weather and the school district’s critical facilities have weather radios to track incoming severe thunderstorms.

### Severe Winter Storms

Frozen pipes and rooftop damage are the main concerns for this hazard, according to the planning team. The school district has experienced the typical Midwest winter blizzards each year. These blizzards have not resulted in any major structural damage to the district’s critical facilities.

### Tornado and Windstorm

Tornado and Windstorm was identified as a top hazard of concern for the school district due to potential the of downed light poles and rooftop damage. During past tornado and windstorm events, the school district has experienced damage including damage to 70% of the South Prairie Elementary School’s roof and roof membranes in September 2013. The August 2020 derecho event resulted in damage to the Oak View School’s roof. The school district plans to mitigate future risks by building safe rooms or storm shelters in Oak View School and the Dallas center-Grimes High School.

## Mitigation Strategy

### Continued Mitigation and Strategic Actions

Mitigation Action	Safe Rooms
<b>Description</b>	Add safe rooms to current school buildings and/or when building new facilities, include safe rooms in the construction.
<b>Hazard(s)</b>	All hazards
<b>Estimated Cost</b>	\$500,000 to \$1,000,000
<b>Funding</b>	Sales tax, PPEL, Bond, HMA
<b>Timeline</b>	3-5 years
<b>Priority</b>	High
<b>Lead Agency</b>	Administration Office
<b>Status</b>	One safe room was completed and a second started with completion anticipated in 2024.

## Plan Maintenance

Hazard Mitigation Plans should be living documents and updated regularly to reflect changes in hazard events, priorities, and mitigation actions. These updates are encouraged to occur after every major disaster event, alongside planning documents (e.g., annual budgets, etc.), during the fall before the HMA grant cycle begins, and/or prior to other funding opportunity cycles begin.

The local planning team is responsible for reviewing and updating this profile as changes occur or after a major event. The local planning team will include the Superintendent and the Director of Buildings and Grounds. The plan will be reviewed bi-annually. The district will involve students, staff, and parents in the plan review and revision process through updates on social media, website updates, letters sent to families, and school board meetings.