

APPENDIX C: ANNUAL EVALUATION WORKSHEETS

ANNUAL EVALUATION WORKSHEET

THIS PAGE LEFT INTENTIONALLY BLANK

ANNUAL EVALUATION WORKSHEET

PURPOSE

This worksheet can be used to measure the progress of this plan and to help identify strengths and weaknesses. Project leaders and partners should complete an evaluation on an annual basis and the results should be compiled and shared with participating entities. Chapter 5 of the watershed plan should be used in conjunction with this worksheet.

Evaluator Name: _____

Evaluator Title & Organization: _____

Date of Evaluation: _____

Period Being Evaluated: _____ - _____

OVERVIEW

The Headwaters of the South Skunk River WMA is utilizing the Iowa Nutrient Reduction Strategy’s (NRS) logic model to measure and evaluate implementation efforts (Figure 1). The measurable indicators that correspond to each category, provide quantified parameters in which to track year-to-year changes and continual trends which allows a standardized protocol for evaluating progress.

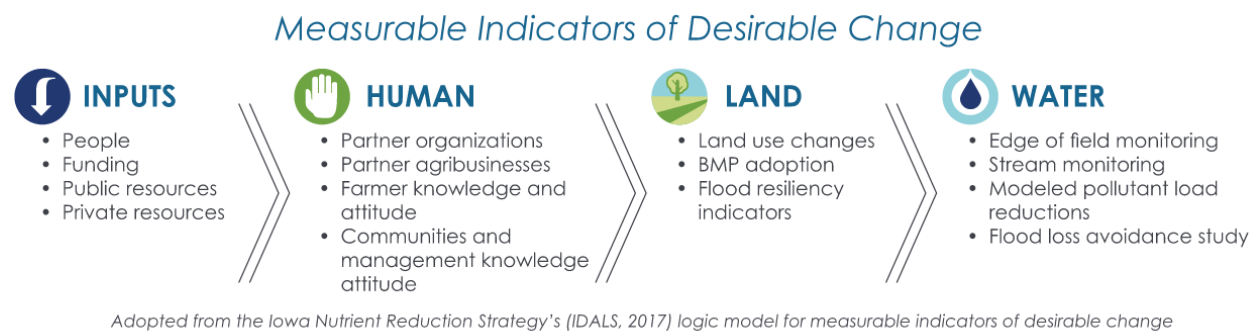


Figure 1: Logic Model Used to Identify Measurable Indicators of Desirable Change

EVALUATION METRIC: INPUTS

	Exceeds	Meets	Partially Meets	Does Not Meet	N/A
Annual review meeting held					
Partners are representative of most watershed interests					
Partners understand their roles and responsibilities					
Partners share a common vision					
Partners are aware of and involved with project activities					
Partners understand the decision-making process					
Meetings are organized and productive					
Partners advocate for the goals of the watershed					
Adequate funding and resources are available to meet goals					
Adequate funding is available to address the watershed goals					
Adequate staffing is available to the WMA to execute the actions identified in the watershed plan					
The WMA has been successful in applying for grants and/or leveraging outside resources					
The WMA has been successful at finding and cultivating partnerships					

Additional Comments on “Inputs”:

EVALUATION METRIC: HUMAN

	Exceeds	Meets	Partially Meets	Does Not Meet	N/A
Positive changes in awareness and attitudes have occurred for target audiences					
Field days and other events have been held					
Project has received publicity					
Attendance at events has increased					

Additional Comments on “Human”:

EVALUATION METRIC: LAND

	Exceeds	Meets	Partially Meets	Does Not Meet	N/A
A database of existing levels of BMPs has been developed and maintained					
Adoption and retention of new BMPs has been tracked					
Flood resiliency projects or other indicators have been completed or have positively changed					
Yearly _____ <i>(insert conservation practice)</i> implementation goals have been met					
Yearly _____ <i>(insert conservation practice)</i> implementation goals have been met					
Yearly _____ <i>(insert conservation practice)</i> implementation goals have been met					
Yearly _____ <i>(insert conservation practice)</i> implementation goals have been met					
Yearly _____ <i>(insert conservation practice)</i> implementation goals have been met					
Yearly _____ <i>(insert conservation practice)</i> implementation goals have been met					
Yearly _____ <i>(insert conservation practice)</i> implementation goals have been met					
Yearly _____ <i>(insert conservation practice)</i> implementation goals have been met					
Majority of implemented conservation practices have been retained after cost-share payments ceased					

Additional Comments on "Land":

EVALUATION METRIC: WATER

	Exceeds	Meets	Partially Meets	Does Not Meet	N/A
Monitoring of nitrogen has shown progress towards reaching plan goals					
Monitoring of phosphorus has shown progress towards reaching plan goals					
Monitoring of sediment / TSS has shown progress towards reaching plan goals					
Monitoring of <i>E. coli</i> bacteria has shown progress towards reaching plan goals					
Impact (financial or other) to farmers and landowners has been positive					
Modeled impacts of nitrogen have shown progress towards reaching plan goals					
Modeled impacts of phosphorus have shown progress towards reaching plan goals					
Modeled impacts of sediment have shown progress towards reaching plan goals					
Modeled impacts of <i>E. coli</i> bacteria have shown progress towards reaching plan goals					
A loss avoidance study has been completed and positive changes in flood risk reduction have occurred					

Additional Comments on “Water”:

STRENGTHS, WEAKNESSES, OPPORTUNITIES, AND THREATS

While thinking about the goals of the watershed plan brainstorm the strengths, weaknesses, opportunities, and threats towards accomplishing these goals over the next year.

STRENGTHS	OPPORTUNITIES
WEAKNESSES	THREATS