

School District Profile

Adel DeSoto Minburn School District

**Dallas County
Hazard Mitigation Plan 2023**

Local Planning Team

Table ADM.1: Adel DeSoto Minburn School District Local Planning Team

Name	Title	Jurisdiction
Greg Dufoe	Superintendent	Adel DeSoto Minburn Schools
Luke Asche	Director of Buildings and Grounds	Adel DeSoto Minburn Schools

Location and Services

Adel DeSoto Minburn (ADM) School District is located in Dallas County, approximately 20 miles west of Des Moines. The district’s mission, as expressed on its website, states “We are committed to engaging ALL students in a challenging and supportive environment that ensures ALL students learn at high levels.” The district is comprised of five schools: Adel DeSoto Minburn High School, Adel DeSoto Minburn Middle School, DeSoto Intermediate, Meadow View Elementary, and Adel Elementary. The district office is located in Adel. English is the predominant language in the district, but Arabic, Spanish, Central Khmer, Russian, and Vietnamese are also spoken. At this time, emergency instructions/notices are not available in all languages spoken by students.

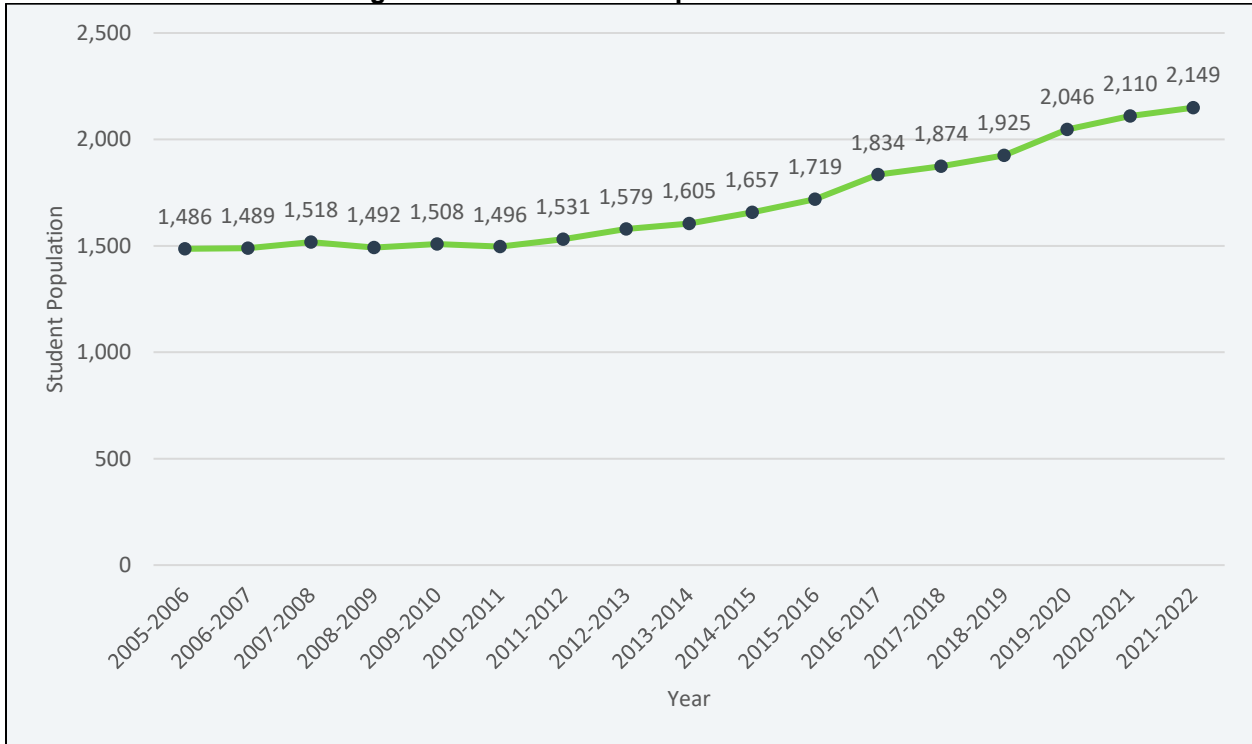
Demographics

The following figure displays the historical student population trend starting with the 2005-06 school year and ending with the 2021-2022 year. It indicates that the student population has steadily increased since 2010. The local planning team noted an anticipated increase of 300 students entering the district in the next five years due to residential growth. This anticipated increase is based on an enrollment analysis done by RSP and Associates in June 2022. There are 2,149 students enrolled in the district.¹

¹ Iowa Department of Education. December 2021. “2021-2022 Iowa Public School Building PreK-12 Enrollments by School, Grade, Race and Gender.” <https://educateiowa.gov/document-type/public-school-building-prek-12-enrollment-grade-race-and-gender>.

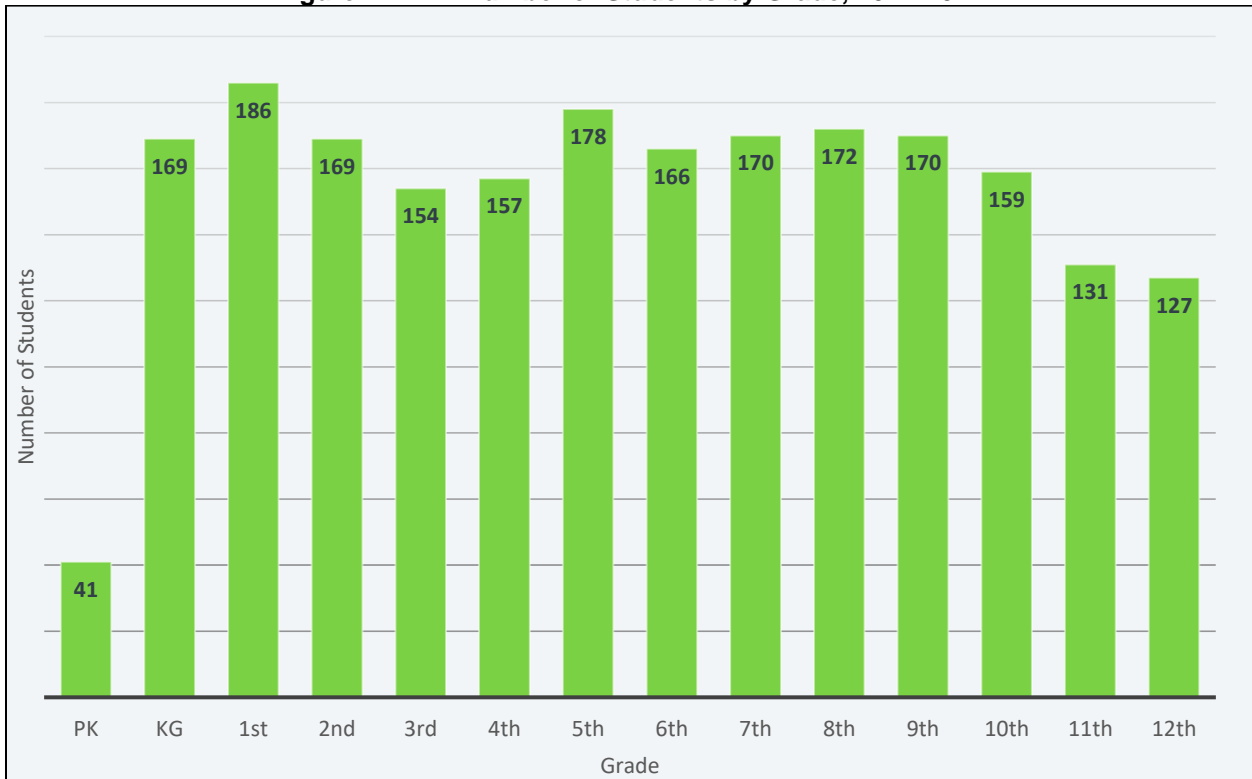
Section Seven: Adel DeSoto Minburn School District Profile

Figure ADM.1: Student Population 2005-2022



Source: Iowa Department of Education

Figure ADM.2: Number of Students by Grade, 2021-2022



Source: Iowa Department of Education

Figure ADM.3: Adel DeSoto Minburn School District

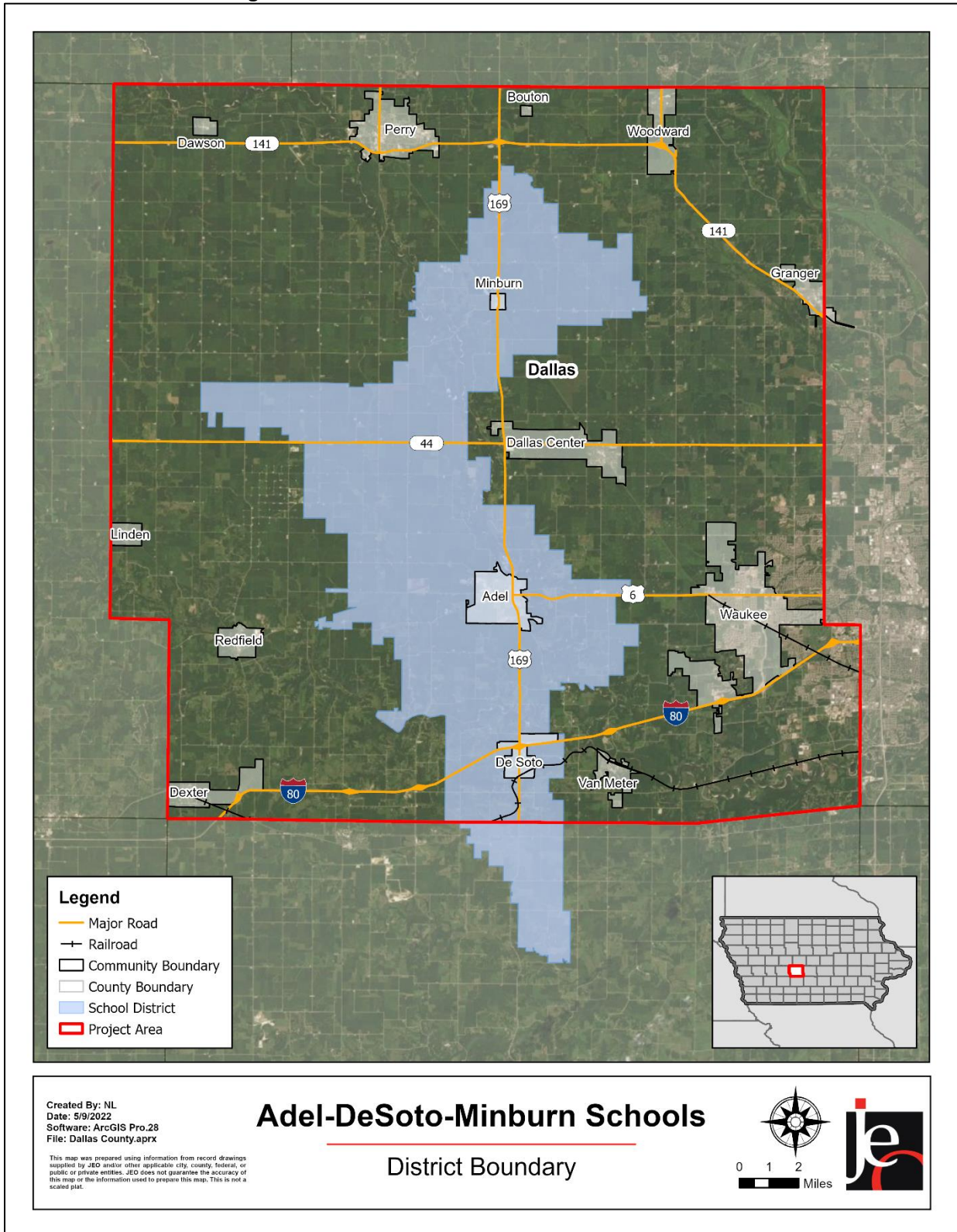


Figure ADM.2 indicates that the largest number of students are in 1st, 5th, and 8th grades. The lowest number of students are in Pre-Kindergarten. According to the Iowa Department of Education, 18.6% of students receive either free or reduced priced meals at school. This is lower than the state average of 40.7%. Additionally, 9.3% of students are in the Special Education Program and 0.9% of students are English Language Learners. These particular students may be more vulnerable during a hazardous event than the rest of the student population.

Table ADM.2: K-12 Student Statistics, 2021-2022

	District	State of Iowa
Free/Reduced Priced Meals	18.6%	40.7%
Special Education Students	9.3%	13.2%
English Language Learners (ESL)	0.9%	6.6%

Source: Iowa Department of Education²

Administration and Staff

The school district has 300 district employees, including a superintendent, five principals, three assistant principals, and supportive staff. The school board is made up of a five-member panel. The district also has a number of additional departments and staff that may be available to implement hazard mitigation initiatives. The district annually updates an Emergency Operations Plan and reviews it with staff and students over the course of each year.

Capability Assessment

The capability assessment consisted of a review of local existing policies, regulations, plans, and programs with hazard mitigation capabilities. The following tables summarize the district's planning and regulatory capability; administrative and technical capability; fiscal capability; educational and outreach capability; and overall capability to implement mitigation projects. Emergency procedures are practiced throughout the year using drills as required by the state of Iowa. The district notifies parents and staff of emergency events through a messaging system of text messages, emails, and phone calls. Local police and fire departments are part of the development team for the district's Emergency Operations Plan and the local planning team notes they expect an increase in collaboration in future years.

Table ADM.3: Capability Assessment

Survey Components/Subcomponents		Yes/No
Planning & Regulatory Capability	Facility Improvements Plan	No
	Continuity of Operations Plan	Yes
	Crisis Response Plan	Yes
	Strategic Plan	No
	Grant Manager	No
	Mutual Aid Agreement	No
	Other (if any)	
Fiscal Capability	Applied for grants in the past	Yes
	Awarded grants in the past	Yes

² Iowa Department of Education. "Student Demographic Information." Accessed April 2022. <https://educateiowa.gov/data-reporting/education-statistics-pk-12>

Section Seven: Adel DeSoto Minburn School District Profile

	Authority to levy taxes for specific purposes such as mitigation projects	Yes
	General Obligation Revenue or Special Tax Bonds	Yes
	Approved bonds in the past	Yes
	Flood Insurance	Yes
	Other (if any)	
Education & Outreach Capability	Local school groups or non-profit organizations focused on environmental protection, emergency preparedness, access, and functional needs populations, etc. (Ex. Parent groups, Crisis Response Teams, etc.)	Yes
	Hazard education or information program	No
	StormReady Certification	No
	Other (if any)	
Drills	Fire	4/year
	Tornado	4/year
	Intruder	3/year
	Bus evacuation	
	Evacuation	
	Other (if any)	

Table ADM.4: Overall Capability

Overall Capability	Limited/Moderate/High
Financial resources needed to implement mitigation projects	Moderate
Staff/expertise to implement projects	Moderate
Public support to implement projects	Moderate
Time to devote to hazard mitigation	Moderate

Plan Integration

Grants and Funding

According to the local planning team, district funds are sufficient to both pursue new capital projects and to maintain facilities and systems. ADM is undergoing a full facility master planning process in 2022-2023 that will include a ten-year plan for maintenance needs and future capital projects. A large portion of funds from a debt service levy is currently dedicated to the new elementary school, Meadow View, which was completed in August 2021. District funds have increased in recent years due to the levy and the district's SAVE revenue from enrollment growth. ADM has not applied for any grants in the last five years.

Response Plans

The school district utilizes an Emergency Operations Plan (2022) to react to hazardous events. The Emergency Operations Plan discusses natural hazards, addresses shelter in place protocols, and identifies the following: scenarios that require evacuation, critical evacuation routes, sheltering locations, opportunities for mitigation following an event, and any gaps related to particular hazards. The plan is updated as needed.

Future Development Trends

The major development to occur in the last five years was the building of Meadow View Elementary School, which was completed in August 2021. A tornado shelter was included in one wing of the new school. There are currently no plans for new construction or renovation within the district; however, a district Facility Master Planning process in 2022-2023 will result in a ten-year plan for new construction and renovation.

Community Lifelines

Transportation

According to the local planning team,, routes between Minburn and Adel are of most concern for the school district. To date, no major accidents have impacted schools within the district. ADM owns 20 school buses and approximately 800 students are bused to and from school each day.

Hazardous Materials

According to the Tier II System reports submitted to the Iowa Department of Natural Resources, there are 13 chemical storage sites in Adel that contain hazardous chemicals. No sites are listed for DeSoto or Minburn. According to the planning team, response resources are sufficient, and no chemical spills have impacted the schools.

Table ADM.5: Chemical Storage Sites

Facility Name	Address	Located in Floodplain?
Adel	2476 Highway 6 Adel, IA 50003	No
Adel Maintenance No 2	516 Greene Highway Adel, IA 50003	No
CenturyLink - Adel CO	908 Prairie Avenue Adel, IA 50003	No
CIRM-- Adel Plant	301 S 6th Street Adel, IA 50003	No
Dallas County Central Maintenance Facility	23380 250th Street Road Adel, IA 50003	No
Ferrellgas	23601 Pasco Lane Adel, IA 50003	No
Fuller Standard Service Inc	1505 Old Portland Road Adel, IA 50003	No
Inland Coatings	26259 Highway 6 Adel, IA 50003	No
Landus Cooperative - Panther	23926 H Avenue Adel, IA 50003	No
Manatts Inc--Adel	103 N. 19th Street Adel, IA 50003	0.2% Floodplain
MidAmerican Energy-Dallas County Service Center	29817 R Ave Adel, IA 50003	No
Northern Natural Gas - Redfield Production & Drill	2554 G Avenue Adel, IA 50003	No
Glen Gary Brick & Tile	1831 W Main Street Adel, IA 50003	No

Source: Iowa Department of Natural Resources³

³ Iowa Department of Natural Resources. 2022. "Emergency Response - Tier II Chemical Storage." Accessed April 2022. <https://facilityexplorer.iowadnr.gov/facilityexplorer/>.

Section Seven: Adel DeSoto Minburn School District Profile

Using location data for district buildings and chemical storage sites, an analysis was run to determine which schools have chemical sites within a one-mile radius. The results of this analysis can be seen in the table below.

Table ADM.6: School Buildings Within One Mile of Chemical Storage Sites

School Building	Address	# of Storage Sites Within One Mile
ADM Middle School	801 Nile Kinnick Dr S Adel, Iowa, 50003	4
Adel Elementary	1608 Grove St Adel, Iowa, 50003	6
ADM High School	801 Nile Kinnick Dr S Adel, Iowa, 50003	4
District Administration Center (DAC)	215 N 11th St Adel, Iowa, 50003	6
Meadow View Elementary	1300 S. 15th St Adel, IA 50003	4

Critical Facilities

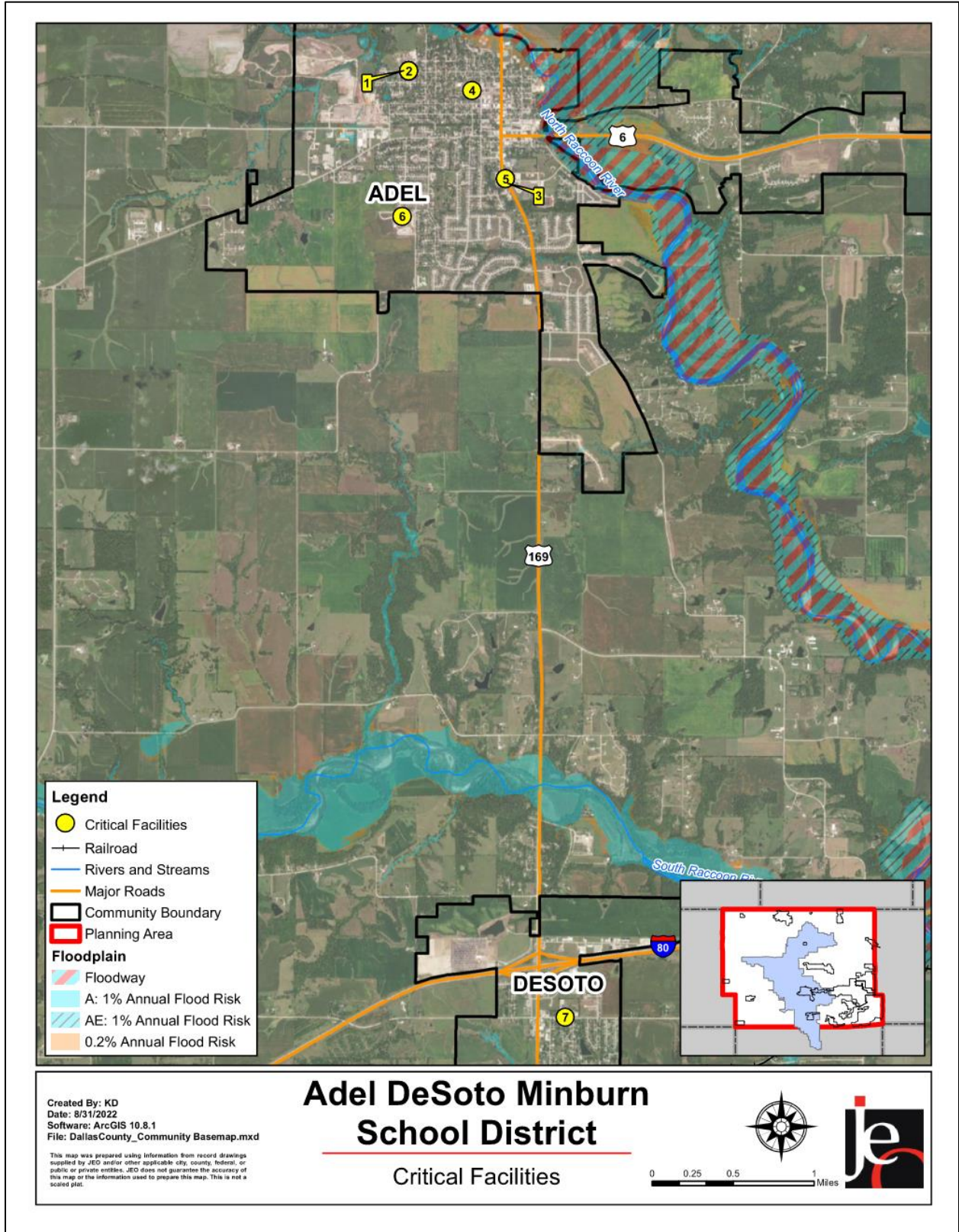
The local planning team identified critical facilities that are vital for disaster response, public shelter, and essential for returning the jurisdiction’s functions to normal during and after a disaster per the FEMA Community Lifelines guidance. Critical facilities were identified during the original planning process and updated by the local planning team as a part of this plan update.

The following table and figure provide a summary of the critical facilities for the jurisdiction.

Table ADM.7: Critical Facilities

CF #	Name	Mass Care (Y/N)	Generator (Y/N)	Floodplain (Y/N)
1	Adel-De Soto-Minburn School District Bus Garage	N	N	N
2	ADM Elementary School	N	N	N
3	ADM Middle School	N	N	N
4	ADM School District Administration Building	N	N	N
5	ADM Senior High School	N	N	N
6	ADM Meadow View Elementary School	N	N	N
7	DeSoto Elementary School	N	N	N

Figure ADM.4: Map of Critical Facilities



Historical Occurrences

See the community profiles for the City of Adel, City of De Soto, and City of Minburn for historical hazard events.

Hazard Prioritization

The hazards discussed in detail below were selected by the local planning team from the county hazard list as the relevant hazards for the jurisdiction. The selected hazards were prioritized by the local planning team based on historical hazard occurrences, potential impacts, and the district's capabilities. For additional discussion regarding area-wide hazards, please see *Section Four: Risk Assessment*.

Severe Thunderstorms (Includes Hail and Lightning)

This hazard was identified as a top hazard of concern for the school district due mainly to its frequency. According to the local planning team, the Minburn Elementary School has sustained damage to a section of their room in a storm that resulted in a full replacement in the early 2000s. To reduce the risk associated with a severe thunderstorm, the district administration center needs backup power generators.

Severe Winter Storms

Frequency and transportation impacts are the main concerns for this hazard, according to the planning team. Student drivers can especially be impacted to winter weather conditions due to their lack of driving experience. The school district routinely experiences winter storms that create the need to have delayed starts, early releases, or even cancel school for a day. The local planning team reports they haven't experienced significant structural damage to critical facilities from a severe winter storm.

Tornado and Windstorm

Tornado and Windstorm was identified as a top hazard of concern for the school district. The recent Derecho of 2020 resulted in power outages for several days and minor damage to buildings and grounds. The Derecho storm of August 2019 also resulted in a lengthy power outage but did not result in any structural damage. In the event of a tornado or windstorm, the Meadow View Elementary School does have safe rooms available for student and staff use.

Mitigation Strategy

Continued Mitigation and Strategic Actions

Mitigation Action	Educate Students on Disasters
Description	To educate students and increase awareness on natural disasters, how to mitigate losses, and increase safety. Continue to use fire and tornado drills regularly.
Hazard(s)	All hazards
Estimated Cost	Staff Time
Funding	Local Funds, Grants
Timeline	1-2 years
Priority	Medium
Lead Agency	Superintendent
Status	The district seeks to improve disaster readiness through drill and effective use of after-action reports.

Mitigation Action	Safe Rooms
Description	Construct saferooms to provide shelter to ADM staff and students. Ensure any new attendance centers have safe rooms/shelters.
Hazard(s)	Tornado and Windstorms, Severe Thunderstorms
Estimated Cost	\$1,000,000
Funding	General Obligation Bonds, Local funds, HMA
Timeline	2-3 years
Priority	Medium
Lead Agency	ADM Schools Superintendent
Status	A saferoom was constructed at the newly build Meadow View Elementary School (2021). Additional rooms needed at any new attendance centers.

Plan Maintenance

Hazard Mitigation Plans should be living documents and updated regularly to reflect changes in hazard events, priorities, and mitigation actions. These updates are encouraged to occur after every major disaster event, alongside planning documents (e.g., annual budgets, etc.), during the fall before the HMA grant cycle begins, and/or prior to other funding opportunity cycles begin.

The local planning team is responsible for reviewing and updating this profile as changes occur or after a major event. The local planning team will include the Superintendent and the Director of Buildings and Grounds. The plan will be reviewed annually, and the public will be included in the review and revision process via board meetings.